



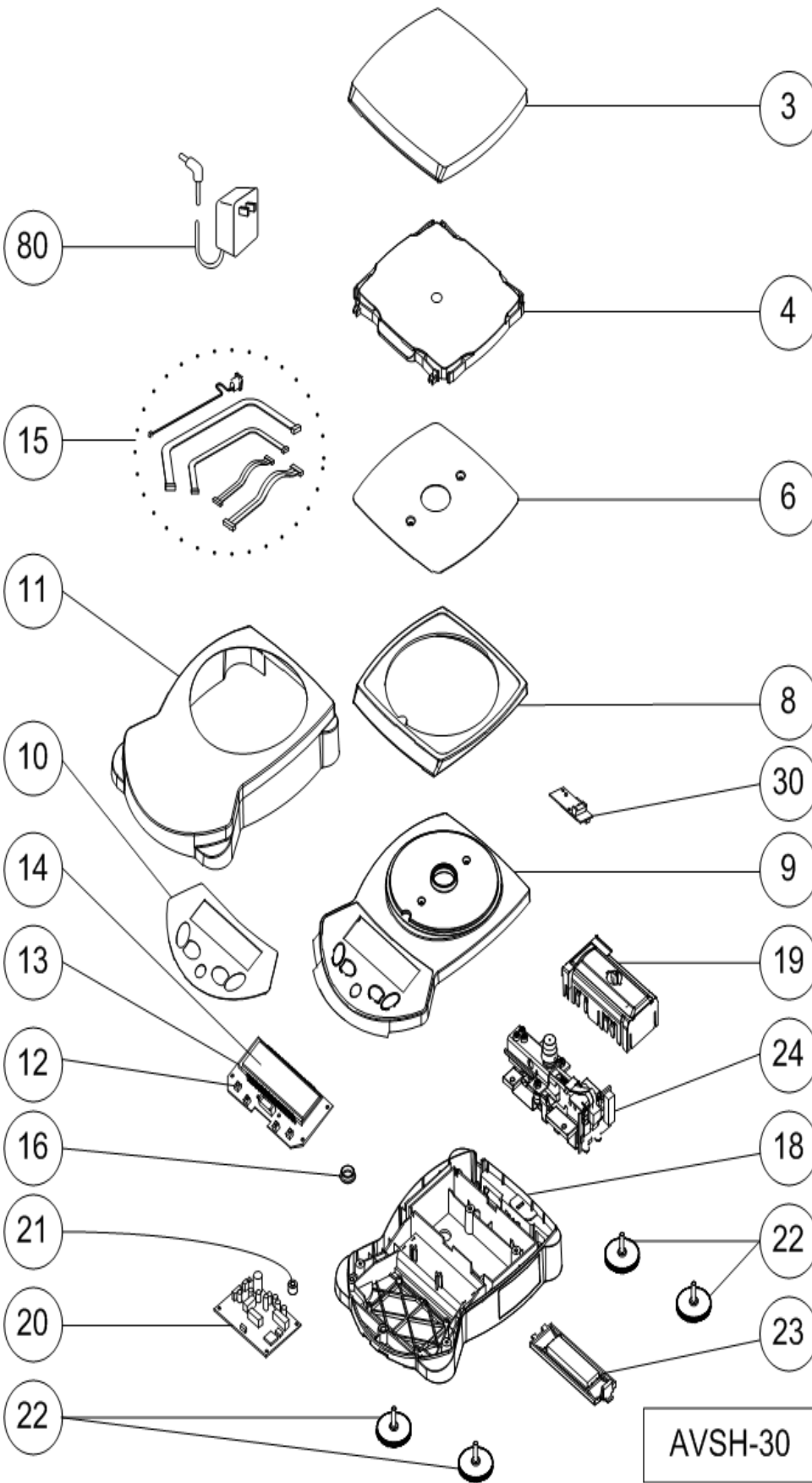
Click on the model being serviced

Adventurer Pro Service Parts List

AV8100	AV53	AV64	AV213	AV212	AV412	AV2102	AV2101
AVG8100	AV53N	AV114	AV213N	AV212N	AV412DM	AV2102N	AV2101DM
AV811	AV53M	AV214	AV313	AVG212	AV412N	AV3102	AV2101N
AVG811	AVG53	AV264	AV313N	AV212DM	AV612N	AV3102N	AV4101
	AV53C	AVG64	AV413		AV812	AV4102	AV4101DM
	AV53CN	AVG114	AV413N	AV212C	AV812M	AV4102N	AV4101N
	AV53CM	AVG214	AV513	AV212CDM	AV812N	AVG2102	AV8101
	AVG53C	AVG264	AV513N	AV212CN	AVG812	AVG3102	AV8101M
		AV64C	AVG213	AVG212C	AVG412	AVG4102	AV8101N
		AV64CN	AVG313		AV412C	AVD4102N	AVG2101
		AV114C	AVG413		AV412CDM	AV2102C	AVG4101
		AV114CM	AVG513		AV412CN	AV2102CM	AVG8101
		AV114CN	AV213C		AV812C	AV2102CN	AV2101C
		AV214C	AV213CM		AV812CM	AV3102C	AV2101CDM
		AV214CM	AV213CN		AV812CN	AV3102CN	AV2101CN
		AV214CN	AV313C		AVG412C	AV4102C	AV4101C
		AV264C	AV313CM		AVG812C	AV4102CM	AV4101CDM
		AV264CM	AV313CN			AV4102CN	AV4101CN
		AV264CN	AV413C			AVG2102C	AV6101N
		AVG64C	AV413CM			AVG3102C	AV8101C
		AVG114C	AV413CN			AVG4102C	AV8101CM
		AVG214C	AVG213C				AV8101CN
		AVG264C	AVG313C				AVG2101C
			AVG413C				AVG4101C
			AV513C				AVG8101C
			AV513CM				
			AV513CN				
			AVG513C				

Note:

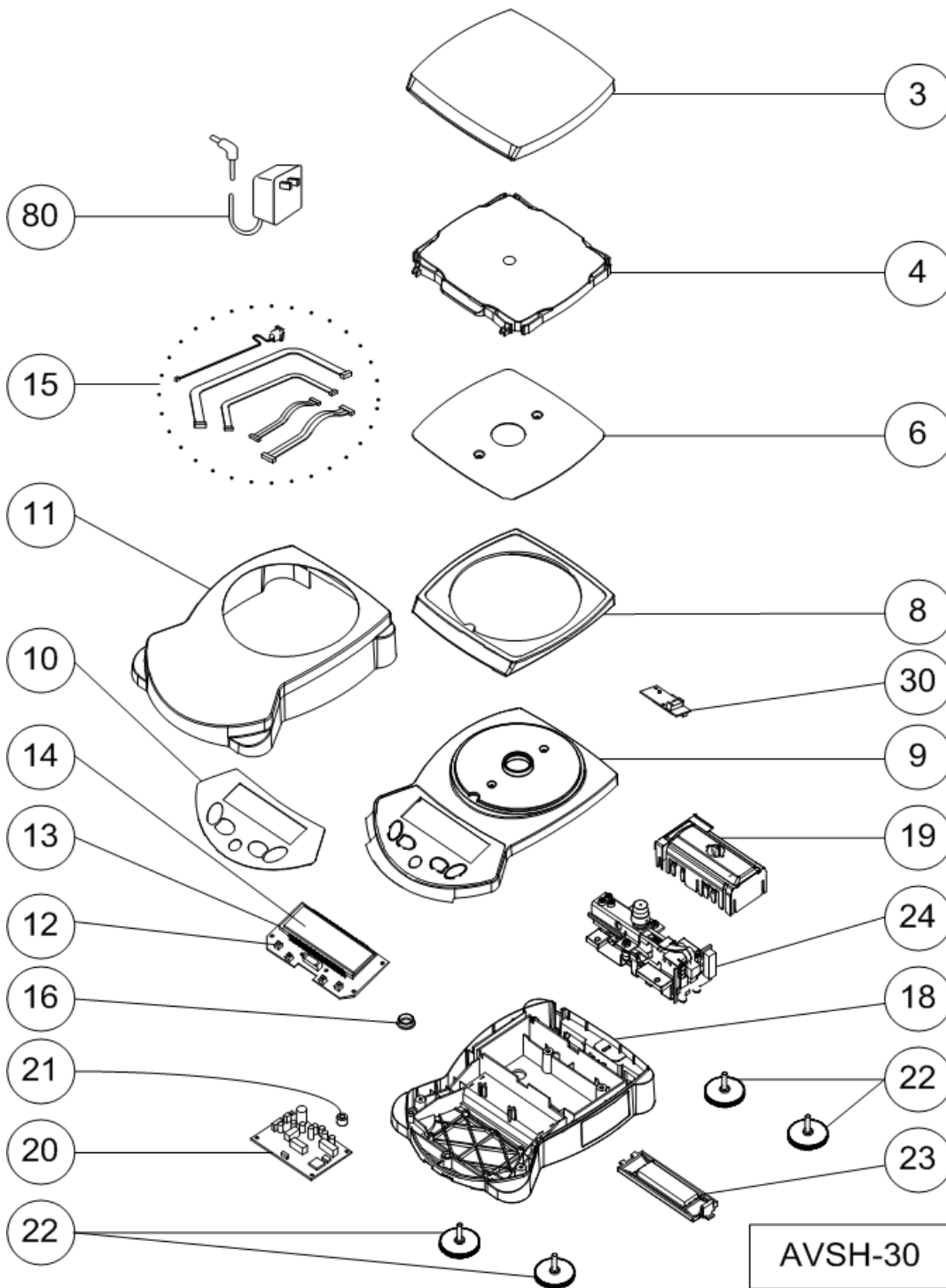
If models AV**R and AV****U, please see model AV****
In one box, all models are using same spare part**



Part numbers are subject to change without notice.

Drawing Item	Part Number	Description
3	12103941	Pan, 5.8x6.3 in./149x162, AdvPro/SL
4	12103944	Pan Sup, 5.8x6.3/149x162, AdvPro/SL
6	12103948	EMC Plate, Square,160mm, Sm Housing
8	12103946	Adapter Ring, Sm. Housing,AdvPro/SL
9	12103854	Housing, Top, Small, AdvPro/SL
10	12103929	Function Label, AdvPro
11	12103980	Cover, In-Use, Sm Housing,AdvPro/SL
13	12103901	PCB, Display, AdvPro
14	12103904	LCD & Backlight, AdvPro
15	12103910	Cable Set, Small Housing, AdvPro/SL
16	12103925	Cover WeighBelow, AdvPro,ScoutPro
18	12103920	Housing, Bottom, Small, AdvPro/SL
19	12103927	Cover, Loadcell,Sm Hsing,AdvPro/SL
20	12103900	PCB, Main, SG, Sm Hsing, AdvPro
21	12103936	Level Bubble, Sm Hsing, AdvPro/SL
22	12103923	Feet, Set of 4, AdvPro/SL
23	12103926	Battery Cover, AdvPro/SL
24	42904577	Loadcell Kit, SG, 8100, AdvPro/SL
30	12103902	PCB, RS232 Interface, AdvPro
NS	12103257	Box, Sm Hsg, Topload, AdvPro/SL
NS	12103928	Hardware Kit, Sm Housing, AdvPro/SL
NS	80251164	Manual, Instr., DE_AdvPro
NS	80251161	Manual, Instr., EN_AdvPro
NS	80251162	Manual, Instr., ES_AdvPro
NS	80251163	Manual, Instr., FR_AdvPro
NS	80251165	Manual, Instr., IT_AdvPro
NS	83997609	Pkg, Comp.,Sm Hsg,Sq Pan,AdvPro/SL
80	46001724	PWR,W,IN,5W,12VDC,EU
	46001774	
80	46001724	PWR,W,IN,5W,12VDC,AU
	46001775	
80	46001724	PWR,W,IN,5W,12VDC,US/JP
	46001776	
80	46001724	PWR,W,IN,5W,12VDC,UK
	46001777	
80	12103921	(P, use 12103854 and 12103929(AdvPro) or 12103852(AdvSL)) Top Cover with Function Label, Avsmall
80	12103928	Hardware Kit, Sm Housing, AdvPro/SL
80	12103022	Security plate, Sm Hsg, NTEP, AdvPro

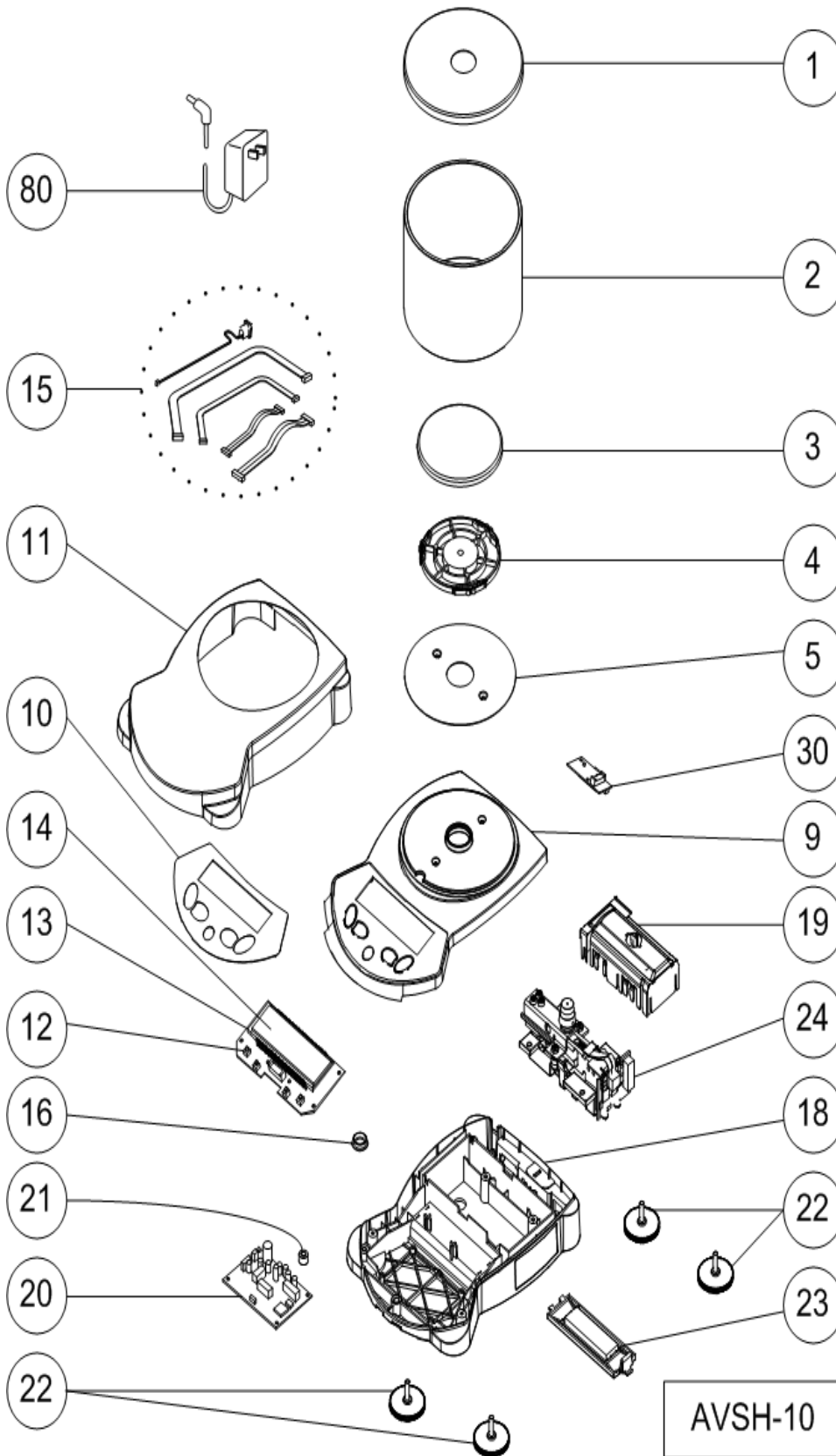
Part numbers are subject to change without notice.



Part numbers are subject to change without notice.

Drawing Item	Part Number	Description
3	12103941	Pan, 5.8x6.3 in./149x162, AdvPro/SL
4	12103944	Pan Sup, 5.8x6.3/149x162, AdvPro/SL
6	12103948	EMC Plate, Square,160mm, Sm Housing
8	12103946	Adapter Ring, Sm. Housing,AdvPro/SL
9	12103854	Housing, Top, Small, AdvPro/SL
10	12103929	Function Label, AdvPro
11	12103980	Cover, In-Use, Sm Housing,AdvPro/SL
13	12103901	PCB, Display, AdvPro
14	12103904	LCD & Backlight, AdvPro
15	12103910	Cable Set, Small Housing, AdvPro/SL
16	12103925	Cover WeighBelow, AdvPro,ScoutPro
18	12103920	Housing, Bottom, Small, AdvPro/SL
19	12103927	Cover, Loadcell,Sm Hsing,AdvPro/SL
20	12103900	PCB, Main, SG, Sm Hsing, AdvPro
21	12103936	Level Bubble, Sm Hsing, AdvPro/SL
22	12103923	Feet, Set of 4, AdvPro/SL
23	12103926	Battery Cover, AdvPro/SL
24	42904574	Loadcell Kit, SG, 811, AdvPro/SL
30	12103902	PCB, RS232 Interface, AdvPro
NS	12103257	Box, Sm Hsg, Topload, AdvPro/SL
NS	12103928	Hardware Kit, Sm Housing, AdvPro/SL
NS	80251164	Manual, Instr., DE_AdvPro
NS	80251161	Manual, Instr., EN_AdvPro
NS	80251162	Manual, Instr., ES_AdvPro
NS	80251163	Manual, Instr., FR_AdvPro
NS	80251165	Manual, Instr., IT_AdvPro
NS	83997609	Pkg, Comp.,Sm Hsg,Sq Pan,AdvPro/SL
80	46001724	PWR,W,IN,5W,12VDC,EU
	46001774	
80	46001724	PWR,W,IN,5W,12VDC,AU
	46001775	
80	46001724	PWR,W,IN,5W,12VDC,US/JP
	46001776	
80	46001724	PWR,W,IN,5W,12VDC,UK
	46001777	
80	12103921	(P, use 12103854 and 12103929(AdvPro) or 12103852(AdvSL)) Top Cover with Function Label, Avsmall
80	12103928	Hardware Kit, Sm Housing, AdvPro/SL
80	12103022	Security plate, Sm Hsg, NTEP, AdvPro

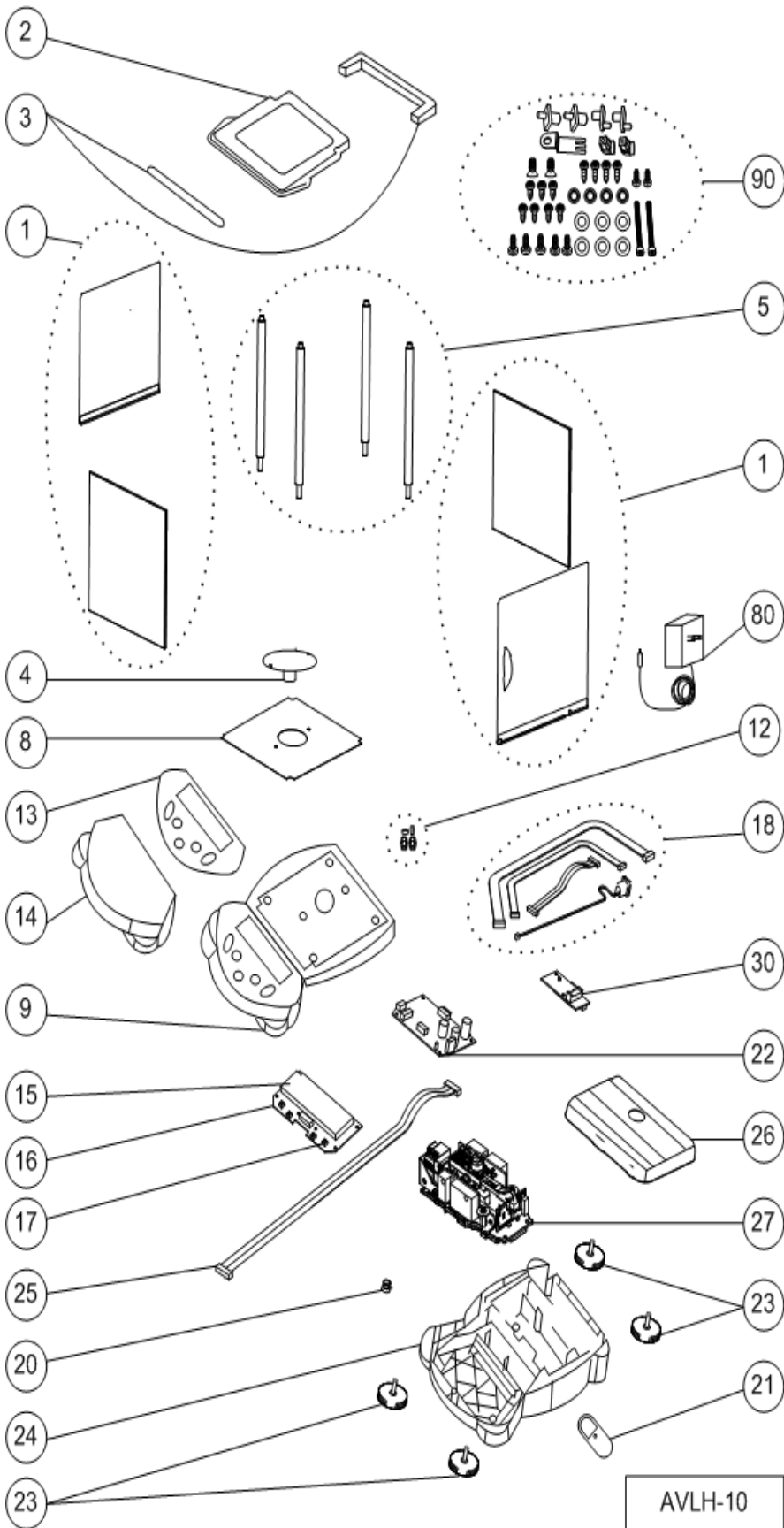
Part numbers are subject to change without notice.



Part numbers are subject to change without notice.

Drawing Item	Part Number	Description
1	12102937	Draftshield Top, Round, AdvPro/SL
2	12102938	Draftshield Glass,Round, AdvPro/SL
3	12102939	Pan, 3.9 in. / 100mm dia, AdvPro/SL
4	12102942	Pan Support, 3.9/100 dia, AdvPro/SL
5	12102947	EMC Plate, Round,100mm, Sm. Housing
9	12103854	Housing, Top, Small, AdvPro/SL
10	12103929	Function Label, AdvPro
11	12103980	Cover, In-Use, Sm Housing,AdvPro/SL
13	12103901	PCB, Display, AdvPro
14	12103904	LCD & Backlight, AdvPro
15	12103910	Cable Set, Small Housing, AdvPro/SL
16	12103925	Cover WeighBelow, AdvPro,ScoutPro
18	12103920	Housing, Bottom, Small, AdvPro/SL
19	12103927	Cover, Loadcell,Sm Hsing,AdvPro/SL
20	12103900	PCB, Main, SG, Sm Hsing, AdvPro
21	12103936	Level Bubble, Sm Hsing, AdvPro/SL
22	12103923	Feet, Set of 4, AdvPro/SL
23	12103926	Battery Cover, AdvPro/SL
24	42904570	Loadcell Kit, SG,153, AdvPro/SL
30	12103902	PCB, RS232 Interface, AdvPro
NS	12103258	Box, Sm Hsg, DS, AdvPro/SL
NS	12103928	Hardware Kit, Sm Housing, AdvPro/SL
NS	80251164	Manual, Instr., DE_AdvPro
NS	80251161	Manual, Instr., EN_AdvPro
NS	80251162	Manual, Instr., ES_AdvPro
NS	80251163	Manual, Instr., FR_AdvPro
NS	80251165	Manual, Instr., IT_AdvPro
NS	83997608	Pkg, Comp.,Sm Hsg, DS,AdvPro/SL
80	46001724	PWR,W,IN,5W,12VDC,EU
	46001774	
80	46001724	PWR,W,IN,5W,12VDC,AU
	46001775	
80	46001724	PWR,W,IN,5W,12VDC,US/JP
	46001776	
80	46001724	PWR,W,IN,5W,12VDC,UK
	46001777	
80	12103921	(P, use 12103854 and 12103929(AdvPro) or 12103852(AdvSL)) Top Cover with Function Label, Avsmall
80	12103928	Hardware Kit, Sm Housing, AdvPro/SL
80	12103022	Security plate, Sm Hsg, NTEP, AdvPro

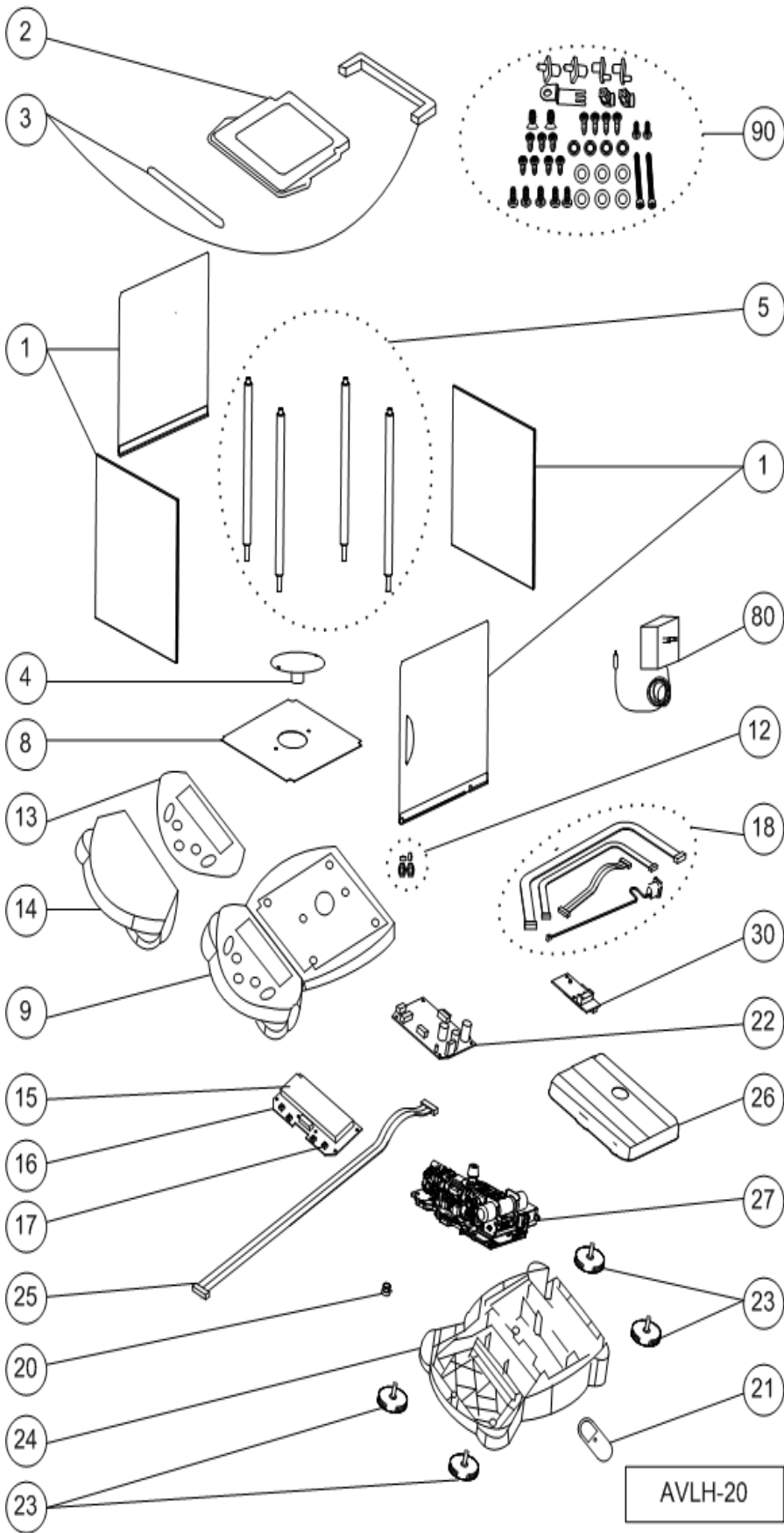
Part numbers are subject to change without notice.



Part numbers are subject to change without notice.

Drawing Item	Part Number	Description
1	12103876	Draftshield Glass,4.5/115,AdvPro/SL
2	12103873	Draftshield Top, Square, AdvPro/SL
3	12103874	Draftshield Frame set, AdvPro/SL
4	12103856	Pan, 3.5 in. / 90mm, AdvPro/SL
5	12103886	Posts for DShield 4.5/115,AdvPro/SL
8	12103887	EMC Plate, for DShield, AdvPro/SL
9	12103852	Housing, Top, Large, AdvPro/SL
12	12103868	Draftshield Roller Kit, AdvPro/SL
13	12103929	Function Label, AdvPro
14	12103879	Cover, In-Use, Lg Housing,AdvPro/SL
15	12103904	LCD & Backlight, AdvPro
16	12103901	PCB, Display, AdvPro
18	12103862	Cable Set, Large Housing, AdvPro/SL
20	12103863	Level Bubble, Lg Hsing, AdvPro/SL
21	12103864	Cover WeighBelow,Lg Hsing,AdvPro/SL
22	12103865	PCB, Main, SG, Lg Hsing, AdvPro
23	12103923	Feet, Set of 4, AdvPro/SL
24	12103855	Housing, Bottom, Large, AdvPro/SL
25	42904907	Cable, SG LC, Lg Hsing, AdvPro/SL
26	12103884	Cover, Loadcell,Lg Hsing,AdvPro/SL
27	42904563	Loadcell Kit,SG,53C, Incal, AdvPro
27.1	42904901	InCal Assy complete, SG, AdvPro
27.2	42904906	Motor, InCal, SG, MFR, AdvPro
30	12103902	PCB, RS232 Interface, AdvPro
90	12103877	Hardware Kit, Lg Housing, AdvPro/SL
NS	12103260	Box, Lg Hsg, L DS, AdvPro/SL,PA
NS	80251164	Manual, Instr., DE_AdvPro
NS	80251161	Manual, Instr., EN_AdvPro
NS	80251162	Manual, Instr., ES_AdvPro
NS	80251163	Manual, Instr., FR_AdvPro
NS	80251165	Manual, Instr., IT_AdvPro
NS	12103246	Pkg, Comp.,Lg Hsg, L DS, AdvPro/SL
80	46001724	PWR,W,IN,5W,12VDC,EU
	46001774	
80	46001724	PWR,W,IN,5W,12VDC,AU
	46001775	
80	46001724	PWR,W,IN,5W,12VDC,US/JP
	46001776	
80	46001724	PWR,W,IN,5W,12VDC,UK
	46001777	
80	12103928	Hardware Kit, Sm Housing, AdvPro/SL
80	12103022	Security plate, Sm Hsg, NTEP, AdvPro

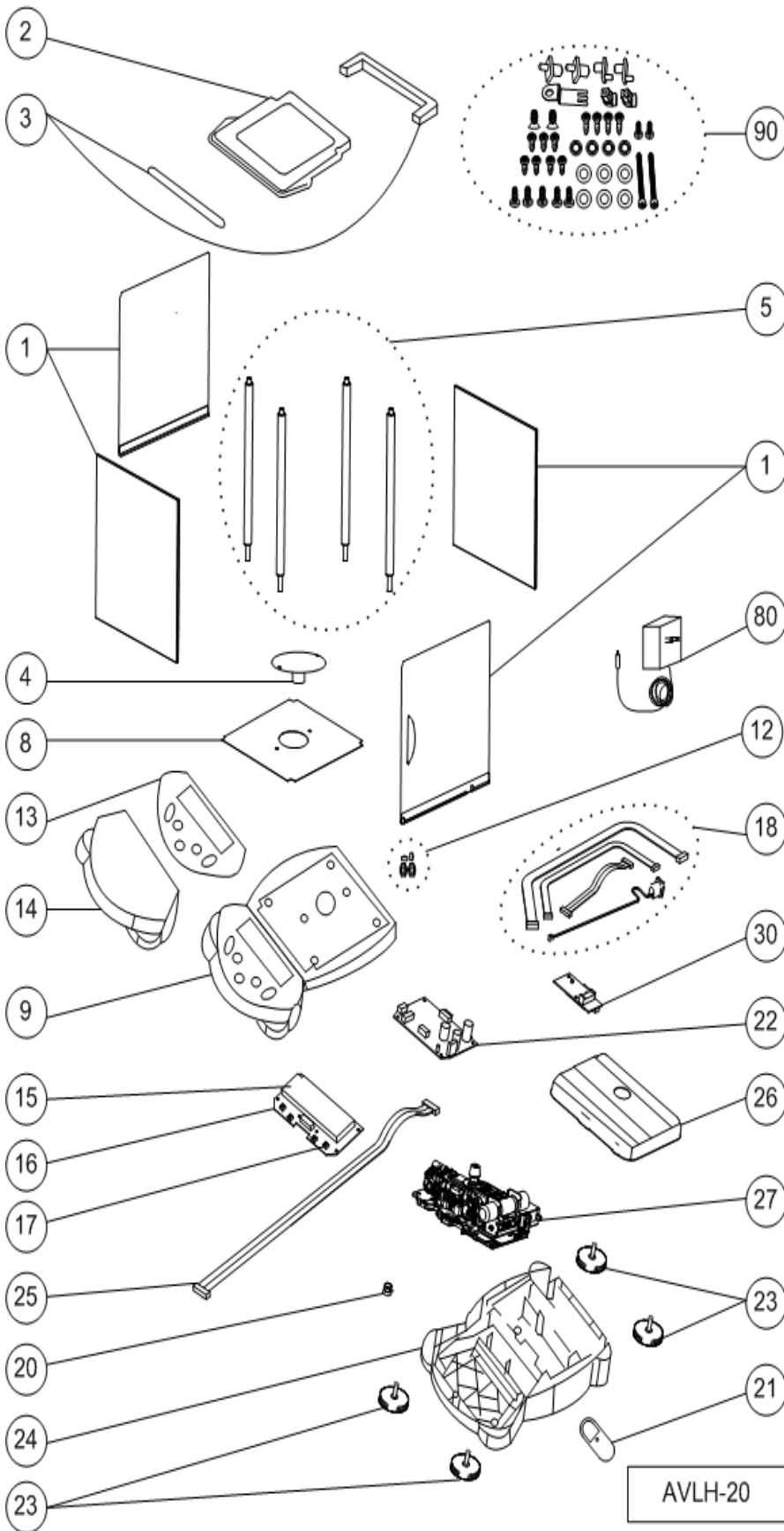
Part numbers are subject to change without notice.



Part numbers are subject to change without notice.

Drawing Item	Part Number	Description
1	12103875	Draftshield Glass,8.6/220,AdvPro/SL
2	12103873	Draftshield Top, Square, AdvPro/SL
3	12103874	Draftshield Frame set, AdvPro/SL
4	12103856	Pan, 3.5 in. / 90mm, AdvPro/SL
5	12103885	Posts for DShield 8.6/220,AdvPro/SL
8	12103887	EMC Plate, for DShield, AdvPro/SL
9	12103852	Housing, Top, Large, AdvPro/SL
12	12103868	Draftshield Roller Kit, AdvPro/SL
13	12103929	Function Label, AdvPro
14	12103879	Cover, In-Use, Lg Housing,AdvPro/SL
15	12103904	LCD & Backlight, AdvPro
16	12103901	PCB, Display, AdvPro
18	12103862	Cable Set, Large Housing, AdvPro/SL
20	12103863	Level Bubble, Lg Hsing, AdvPro/SL
21	12103864	Cover WeighBelow,Lg Hsing,AdvPro/SL
22	12103866	PCB, Main, MFR, Lg Hsing, AdvPro
23	12103923	Feet, Set of 4, AdvPro/SL
24	12103855	Housing, Bottom, Large, AdvPro/SL
25	42904903	Cable, MFR LC, UpTo 410g, AdvPro/SL
26	12103884	Cover, Loadcell,Lg Hsing,AdvPro/SL
27	42904505	Loadcell Kit, MFR, 264, AdvPro/SL
27.1	42904904	PCB, MFR LC, up to 410g,AdvPro/SL
27.2	42904908	Ratio Beam, MFR Loadcell,AdvPro/SL
27.3	42904909	Sensor, MFR Loadcell, AdvPro/SL
30	12103902	PCB, RS232 Interface, AdvPro
90	12103877	Hardware Kit, Lg Housing, AdvPro/SL
NS	12103259	Box, Lg Hsg, H DS, AdvPro/SL
NS	80251164	Manual, Instr., DE_AdvPro
NS	80251161	Manual, Instr., EN_AdvPro
NS	80251162	Manual, Instr., ES_AdvPro
NS	80251163	Manual, Instr., FR_AdvPro
NS	80251165	Manual, Instr., IT_AdvPro
NS	12103248	Pkg, Comp.,Lg Hsg, H DS, AdvPro/SL
80	46001724	PWR,W,IN,5W,12VDC,EU
	46001774	
80	46001724	PWR,W,IN,5W,12VDC,AU
	46001775	
80	46001724	PWR,W,IN,5W,12VDC,US/JP
	46001776	
80	46001724	PWR,W,IN,5W,12VDC,UK
	46001777	
NS	80251192	Manual, Instr., AdvPro DraftShield, Sheet
NS	12103021	Security plate, Lg Hsg, NTEP, AdvPro

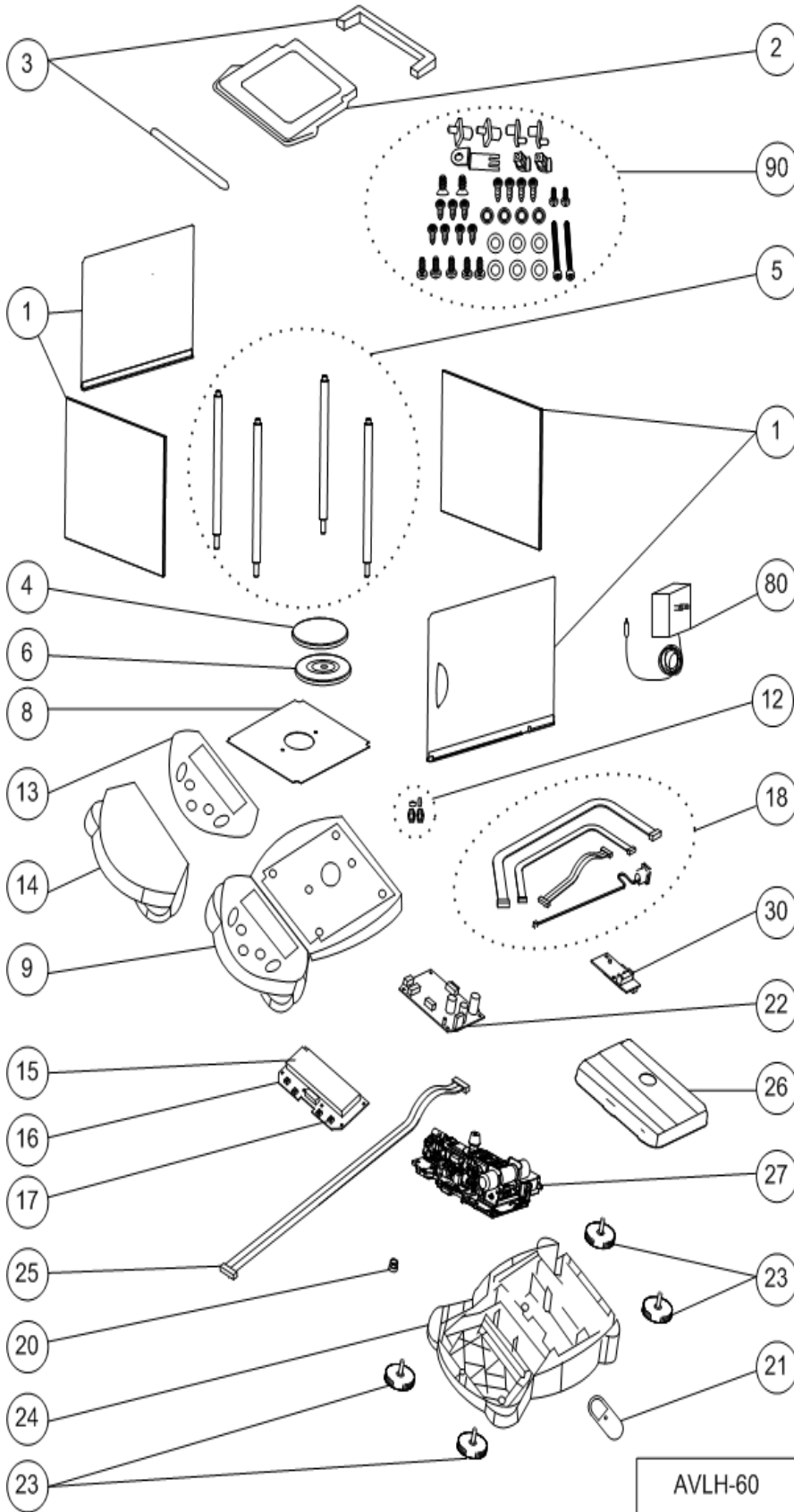
Part numbers are subject to change without notice.



Part numbers are subject to change without notice.

Drawing Item	Part Number	Description
1	12103875	Draftshield Glass,8.6/220,AdvPro/SL
2	12103873	Draftshield Top, Square, AdvPro/SL
3	12103874	Draftshield Frame set, AdvPro/SL
4	12103856	Pan, 3.5 in. / 90mm, AdvPro/SL
5	12103885	Posts for DShield 8.6/220,AdvPro/SL
8	12103887	EMC Plate, for DShield, AdvPro/SL
9	12103852	Housing, Top, Large, AdvPro/SL
12	12103868	Draftshield Roller Kit, AdvPro/SL
13	12103929	Function Label, AdvPro
14	12103879	Cover, In-Use, Lg Housing,AdvPro/SL
15	12103904	LCD & Backlight, AdvPro
16	12103901	PCB, Display, AdvPro
18	12103862	Cable Set, Large Housing, AdvPro/SL
20	12103863	Level Bubble, Lg Hsing, AdvPro/SL
21	12103864	Cover WeighBelow,Lg Hsing,AdvPro/SL
22	12103866	PCB, Main, MFR, Lg Hsing, AdvPro
23	12103923	Feet, Set of 4, AdvPro/SL
24	12103855	Housing, Bottom, Large, AdvPro/SL
25	42904903	Cable, MFR LC, UpTo 410g, AdvPro/SL
26	12103884	Cover, Loadcell,Lg Hsing,AdvPro/SL
27	80252512	Loadcell Kit, MFR, InCal,264, AdvPro
27.1	42904904	PCB, MFR LC, up to 410g,AdvPro/SL
27.2	42904908	Ratio Beam, MFR Loadcell,AdvPro/SL
27.3	42904909	Sensor, MFR Loadcell, AdvPro/SL
27.4	42904906	Motor, InCal, SG, MFR, AdvPro
27.5	42904900	InCal Assy complete, MFR, AdvPro
30	12103902	PCB, RS232 Interface, AdvPro
90	12103877	Hardware Kit, Lg Housing, AdvPro/SL
NS	12103259	Box, Lg Hsg, H DS, AdvPro/SL
NS	80251164	Manual, Instr., DE_AdvPro
NS	80251161	Manual, Instr., EN_AdvPro
NS	80251162	Manual, Instr., ES_AdvPro
NS	80251163	Manual, Instr., FR_AdvPro
NS	80251165	Manual, Instr., IT_AdvPro
NS	12103248	Pkg, Comp.,Lg Hsg, H DS, AdvPro/SL
80	46001724	PWR,W,IN,5W,12VDC,EU
	46001774	
80	46001724	PWR,W,IN,5W,12VDC,AU
	46001775	
80	46001724	PWR,W,IN,5W,12VDC,US/JP
	46001776	
80	46001724	PWR,W,IN,5W,12VDC,UK
	46001777	
NS	80251192	Manual, Instr., AdvPro DraftShield, Sheet
NS	12103021	Security plate, Lg Hsg, NTEP, AdvPro

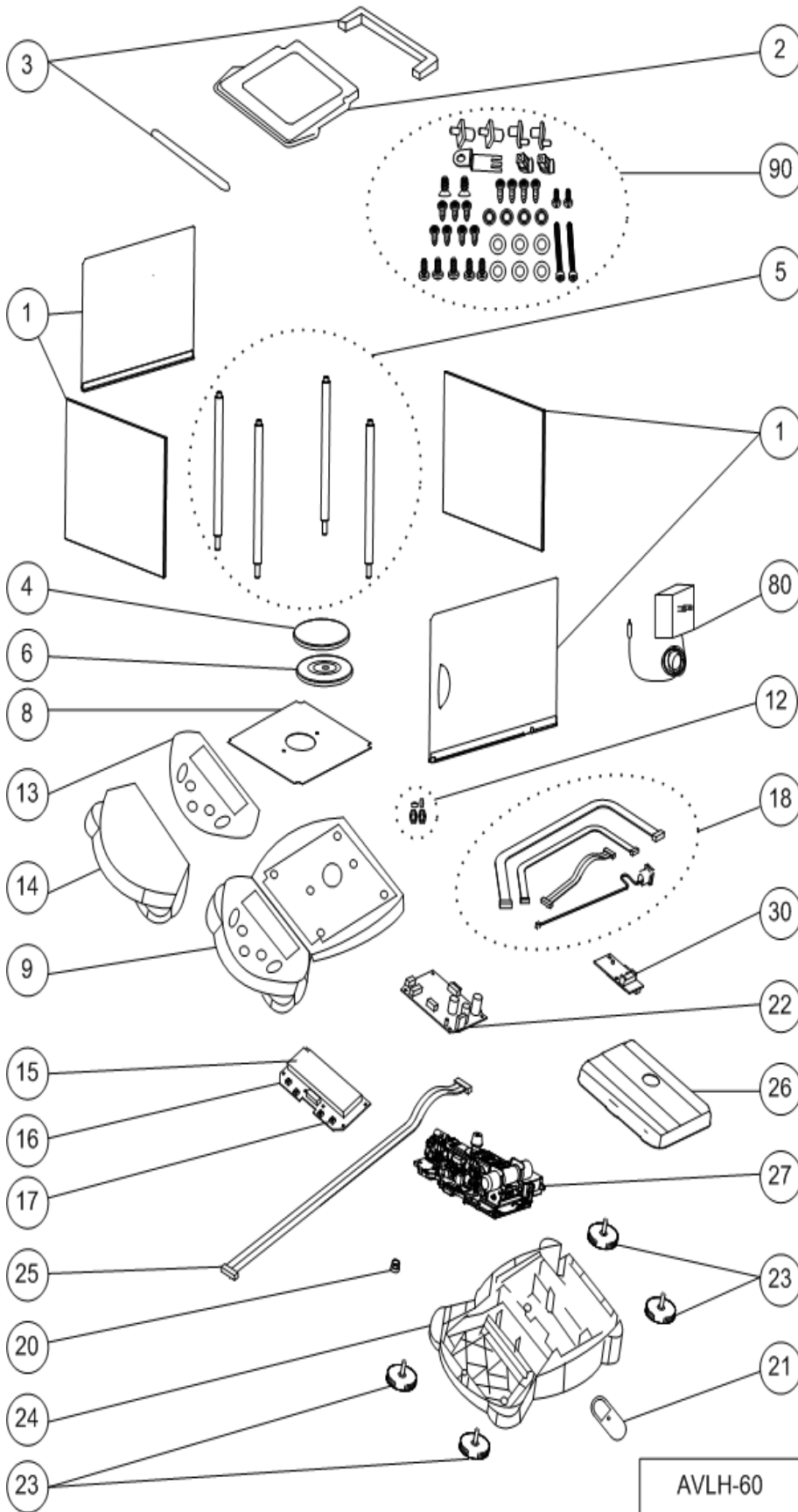
Part numbers are subject to change without notice.



Part numbers are subject to change without notice.

Drawing Item	Part Number	Description
1	12103876	Draftshield Glass,4.5/115,AdvPro/SL
2	12103873	Draftshield Top, Square, AdvPro/SL
3	12103874	Draftshield Frame set, AdvPro/SL
4	12102940	Pan, 4.7 in. / 120mm dia, AdvPro/SL
5	12103886	Posts for DShield 4.5/115,AdvPro/SL
6	12103867	Pan Sup,4.7/120dia,Lg Hsg,AdvPro/SL
8	12103887	EMC Plate, for DShield, AdvPro/SL
9	12103852	Housing, Top, Large, AdvPro/SL
12	12103868	Draftshield Roller Kit, AdvPro/SL
13	12103929	Function Label, AdvPro
14	12103879	Cover, In-Use, Lg Housing,AdvPro/SL
15	12103904	LCD & Backlight, AdvPro
16	12103901	PCB, Display, AdvPro
18	12103862	Cable Set, Large Housing, AdvPro/SL
20	12103863	Level Bubble, Lg Hsing, AdvPro/SL
21	12103864	Cover WeighBelow,Lg Hsing,AdvPro/SL
22	12103866	PCB, Main, MFR, Lg Hsing, AdvPro
23	12103923	Feet, Set of 4, AdvPro/SL
24	12103855	Housing, Bottom, Large, AdvPro/SL
25	42904903	Cable, MFR LC, UpTo 410g, AdvPro/SL
26	12103884	Cover, Loadcell,Lg Hsing,AdvPro/SL
27	42904515	Loadcell Kit, MFR, 413, AdvPro/SL
27.1	42904904	PCB, MFR LC, up to 410g,AdvPro/SL
27.2	42904908	Ratio Beam, MFR Loadcell,AdvPro/SL
27.3	42904909	Sensor, MFR Loadcell, AdvPro/SL
30	12103902	PCB, RS232 Interface, AdvPro
90	12103877	Hardware Kit, Lg Housing, AdvPro/SL
NS	12103260	Box, Lg Hsg, L DS, AdvPro/SL,PA
NS	80251164	Manual, Instr., DE_AdvPro
NS	80251161	Manual, Instr., EN_AdvPro
NS	80251162	Manual, Instr., ES_AdvPro
NS	80251163	Manual, Instr., FR_AdvPro
NS	80251165	Manual, Instr., IT_AdvPro
NS	12103246	Pkg, Comp.,Lg Hsg, L DS, AdvPro/SL
80	46001724	PWR,W,IN,5W,12VDC,EU
	46001774	
80	46001724	PWR,W,IN,5W,12VDC,AU
	46001775	
80	46001724	PWR,W,IN,5W,12VDC,US/JP
	46001776	
80	46001724	PWR,W,IN,5W,12VDC,UK
	46001777	
NS	80251192	Manual, Instr., AdvPro DraftShield, Sheet
NS	12103021	Security plate, Lg Hsg, NTEP, AdvPro

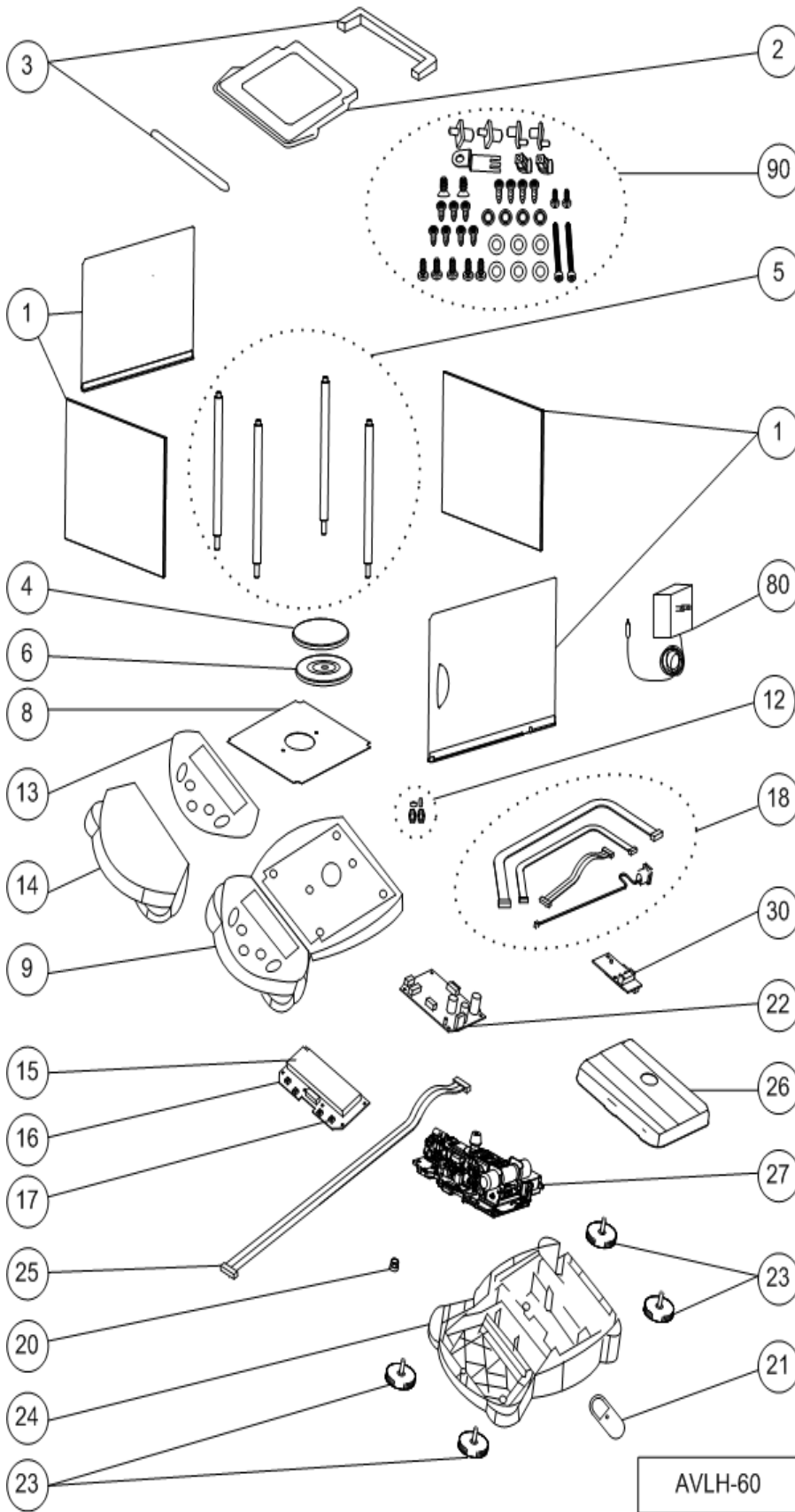
Part numbers are subject to change without notice.



Part numbers are subject to change without notice.

Drawing Item	Part Number	Description
1	12103876	Draftshield Glass,4.5/115,AdvPro/SL
2	12103873	Draftshield Top, Square, AdvPro/SL
3	12103874	Draftshield Frame set, AdvPro/SL
4	12102940	Pan, 4.7 in. / 120mm dia, AdvPro/SL
5	12103886	Posts for DShield 4.5/115,AdvPro/SL
6	12103867	Pan Sup,4.7/120dia,Lg Hsg,AdvPro/SL
8	12103887	EMC Plate, for DShield, AdvPro/SL
9	12103852	Housing, Top, Large, AdvPro/SL
12	12103868	Draftshield Roller Kit, AdvPro/SL
13	12103929	Function Label, AdvPro
14	12103879	Cover, In-Use, Lg Housing,AdvPro/SL
15	12103904	LCD & Backlight, AdvPro
16	12103901	PCB, Display, AdvPro
18	12103862	Cable Set, Large Housing, AdvPro/SL
20	12103863	Level Bubble, Lg Hsing, AdvPro/SL
21	12103864	Cover WeighBelow,Lg Hsing,AdvPro/SL
22	12103866	PCB, Main, MFR, Lg Hsing, AdvPro
23	12103923	Feet, Set of 4, AdvPro/SL
24	12103855	Housing, Bottom, Large, AdvPro/SL
25	42904903	Cable, MFR LC, UpTo 410g, AdvPro/SL
26	12103884	Cover, Loadcell,Lg Hsing,AdvPro/SL
27	80252511	Loadcell Kit, MFR, InCal,413, AdvPro
27.1	42904904	PCB, MFR LC, up to 410g,AdvPro/SL
27.2	42904908	Ratio Beam, MFR Loadcell,AdvPro/SL
27.3	42904909	Sensor, MFR Loadcell, AdvPro/SL
27.4	42904906	Motor, InCal, SG, MFR, AdvPro
27.5	42904900	InCal Assy complete, MFR, AdvPro
30	12103902	PCB, RS232 Interface, AdvPro
90	12103877	Hardware Kit, Lg Housing, AdvPro/SL
NS	12103260	Box, Lg Hsg, L DS, AdvPro/SL,PA
NS	80251164	Manual, Instr., DE_AdvPro
NS	80251161	Manual, Instr., EN_AdvPro
NS	80251162	Manual, Instr., ES_AdvPro
NS	80251163	Manual, Instr., FR_AdvPro
NS	80251165	Manual, Instr., IT_AdvPro
NS	12103246	Pkg, Comp.,Lg Hsg, L DS, AdvPro/SL
80	46001724	PWR,W,IN,5W,12VDC,EU
	46001774	
80	46001724	PWR,W,IN,5W,12VDC,AU
	46001775	
80	46001724	PWR,W,IN,5W,12VDC,US/JP
	46001776	
80	46001724	PWR,W,IN,5W,12VDC,UK
	46001777	
NS	80251192	Manual, Instr., AdvPro DraftShield, Sheet
NS	12103021	Security plate, Lg Hsg, NTEP, AdvPro

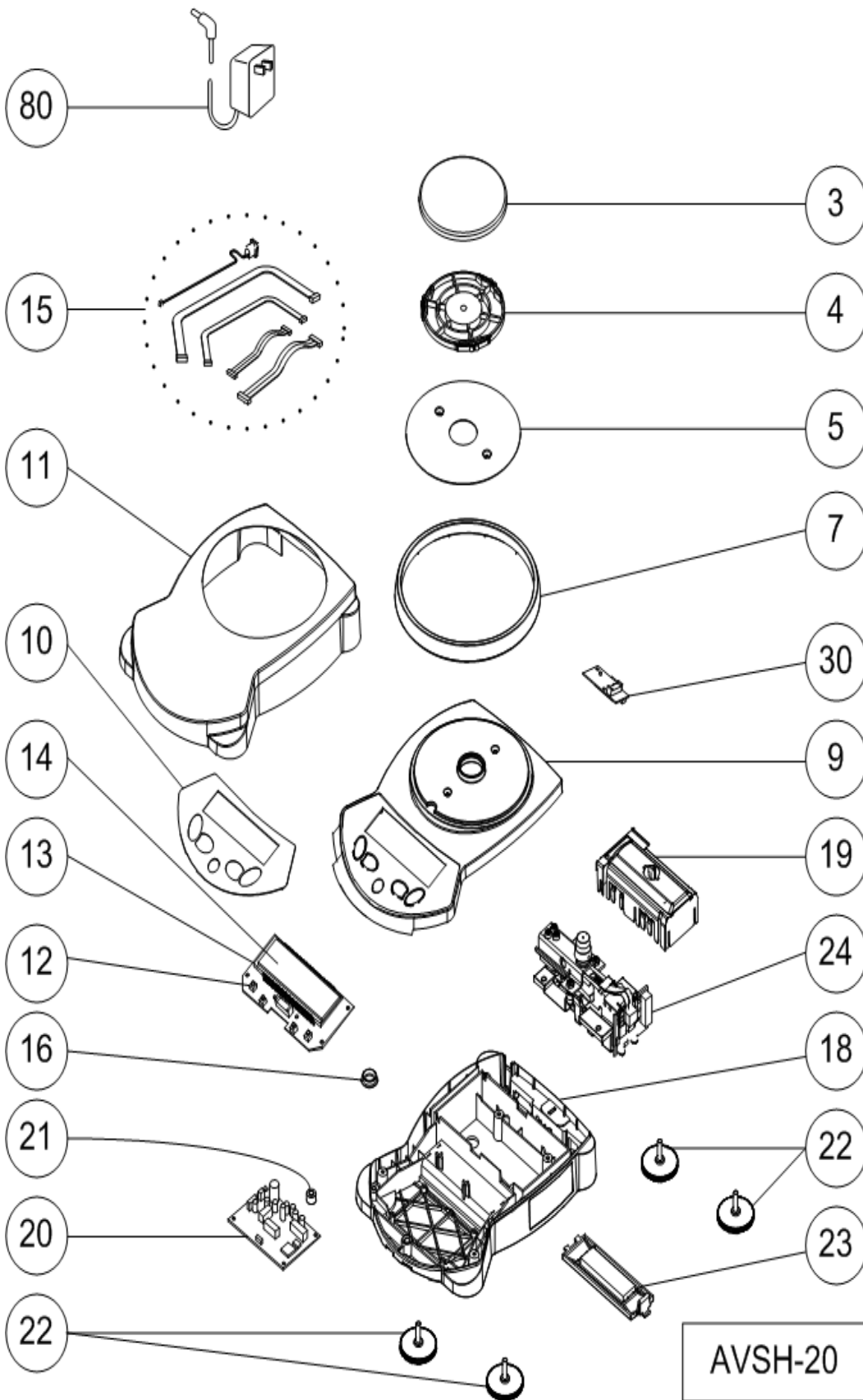
Part numbers are subject to change without notice.



Part numbers are subject to change without notice.

Drawing Item	Part Number	Description
1	12103876	Draftshield Glass,4.5/115,AdvPro/SL
2	12103873	Draftshield Top, Square, AdvPro/SL
3	12103874	Draftshield Frame set, AdvPro/SL
4	12102940	Pan, 4.7 in. / 120mm dia, AdvPro/SL
5	12103886	Posts for DShield 4.5/115,AdvPro/SL
6	12103867	Pan Sup,4.7/120dia,Lg Hsg,AdvPro/SL
8	12103887	EMC Plate, for DShield, AdvPro/SL
9	12103852	Housing, Top, Large, AdvPro/SL
12	12103868	Draftshield Roller Kit, AdvPro/SL
13	12103929	Function Label, AdvPro
14	12103879	Cover, In-Use, Lg Housing,AdvPro/SL
15	12103904	LCD & Backlight, AdvPro
16	12103901	PCB, Display, AdvPro
18	12103862	Cable Set, Large Housing, AdvPro/SL
20	12103863	Level Bubble, Lg Hsing, AdvPro/SL
21	12103864	Cover WeighBelow,Lg Hsing,AdvPro/SL
22	12103866	PCB, Main, MFR, Lg Hsing, AdvPro
23	12103923	Feet, Set of 4, AdvPro/SL
24	12103855	Housing, Bottom, Large, AdvPro/SL
25	42904902	Cable, MFR LC, Over 410g, AdvPro/SL
26	12103884	Cover, Loadcell,Lg Hsing,AdvPro/SL
27	80252508	Loadcell Kit, MFR, InCal,513, AdvPro
27.1	42904905	PCB, MFR LC, over 410g, AdvPro/SL
27.2	42904908	Ratio Beam, MFR Loadcell,AdvPro/SL
27.3	42904909	Sensor, MFR Loadcell, AdvPro/SL
27.4	42904906	Motor, InCal, SG, MFR, AdvPro
27.5	42904900	InCal Assy complete, MFR, AdvPro
30	12103902	PCB, RS232 Interface, AdvPro
90	12103877	Hardware Kit, Lg Housing, AdvPro/SL
NS	12103260	Box, Lg Hsg, L DS, AdvPro/SL,PA
NS	80251164	Manual, Instr., DE_AdvPro
NS	80251161	Manual, Instr., EN_AdvPro
NS	80251162	Manual, Instr., ES_AdvPro
NS	80251163	Manual, Instr., FR_AdvPro
NS	80251165	Manual, Instr., IT_AdvPro
NS	12103246	Pkg, Comp.,Lg Hsg, L DS, AdvPro/SL
80	46001724	PWR,W,IN,5W,12VDC,EU
	46001774	
80	46001724	PWR,W,IN,5W,12VDC,AU
	46001775	
80	46001724	PWR,W,IN,5W,12VDC,US/JP
	46001776	
80	46001724	PWR,W,IN,5W,12VDC,UK
	46001777	

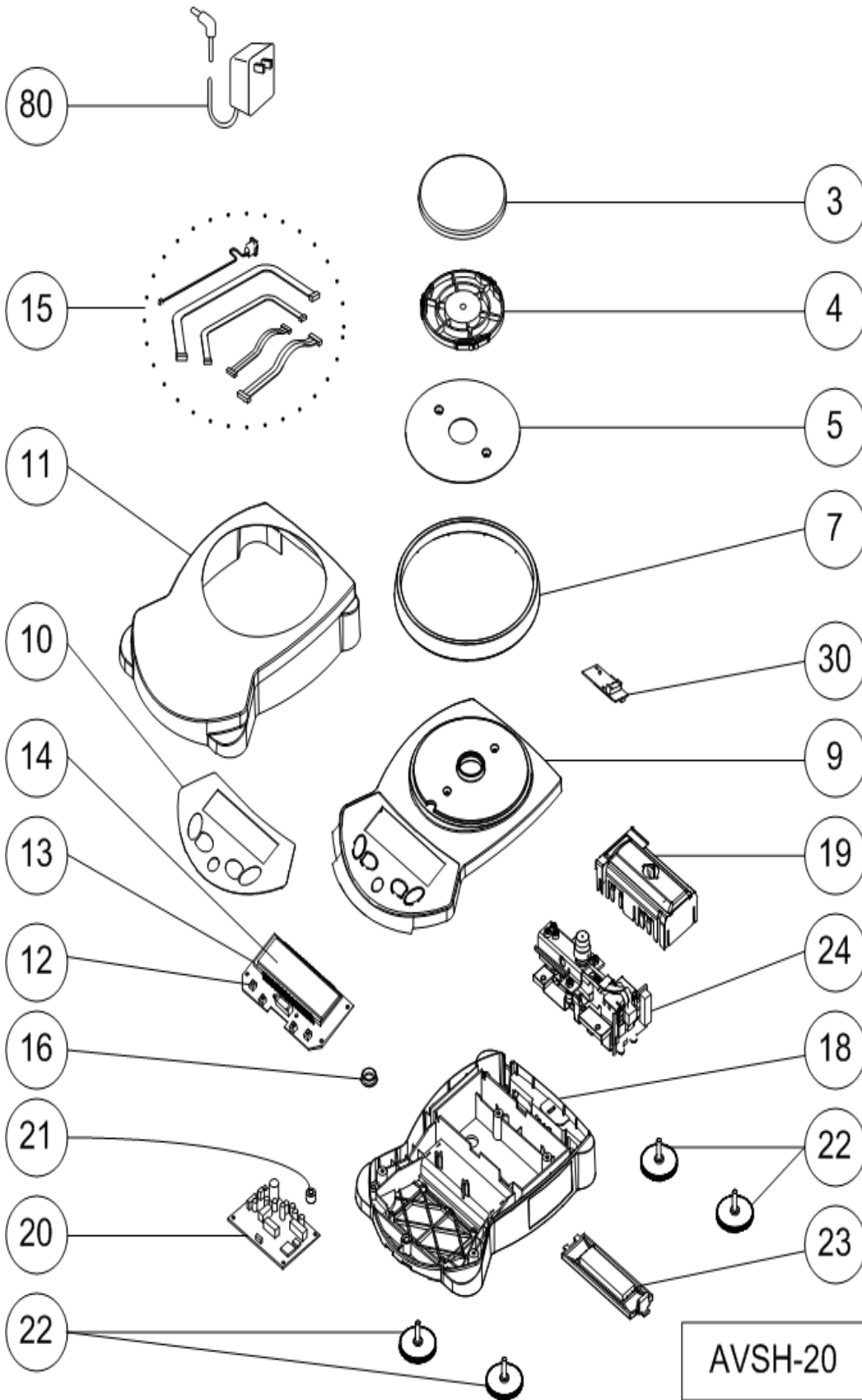
Part numbers are subject to change without notice.



Part numbers are subject to change without notice.

Drawing Item	Part Number	Description
3	12102940	Pan, 4.7 in. / 120mm dia, AdvPro/SL
4	12102943	Pan Sup,4.7/120dia,Sm Hsg,AdvPro/SL
5	12102947	EMC Plate, Round,100mm, Sm. Housing
7	12103945	Wind Ring, 4.7/120, AdvPro/SL
9	12103854	Housing, Top, Small, AdvPro/SL
10	12103929	Function Label, AdvPro
11	12103980	Cover, In-Use, Sm Housing,AdvPro/SL
13	12103901	PCB, Display, AdvPro
14	12103904	LCD & Backlight, AdvPro
15	12103910	Cable Set, Small Housing, AdvPro/SL
16	12103925	Cover WeighBelow, AdvPro,ScoutPro
18	12103920	Housing, Bottom, Small, AdvPro/SL
19	12103927	Cover, Loadcell,Sm Hsing,AdvPro/SL
20	12103900	PCB, Main, SG, Sm Hsing, AdvPro
21	12103936	Level Bubble, Sm Hsing, AdvPro/SL
22	12103923	Feet, Set of 4, AdvPro/SL
23	12103926	Battery Cover, AdvPro/SL
24	42904571	Loadcell Kit, SG, 312, AdvPro/SL
30	12103902	PCB, RS232 Interface, AdvPro
NS	12103257	Box, Sm Hsg, Topload, AdvPro/SL
NS	12103928	Hardware Kit, Sm Housing, AdvPro/SL
NS	80251164	Manual, Instr., DE_AdvPro
NS	80251161	Manual, Instr., EN_AdvPro
NS	80251162	Manual, Instr., ES_AdvPro
NS	80251163	Manual, Instr., FR_AdvPro
NS	80251165	Manual, Instr., IT_AdvPro
NS	83997609	Pkg, Comp.,Sm Hsg,Sq Pan,AdvPro/SL
80	46001724	PWR,W,IN,5W,12VDC,EU
	46001774	
80	46001724	PWR,W,IN,5W,12VDC,AU
	46001775	
80	46001724	PWR,W,IN,5W,12VDC,US/JP
	46001776	
80	46001724	PWR,W,IN,5W,12VDC,UK
	46001777	
NS	12103021	Security plate, Lg Hsg, NTEP, AdvPro
NS	12103921	(P, use 12103854 and 12103929(AdvPro) or 12103852(AdvSL)) Top Cover with Function Label, Avsmall

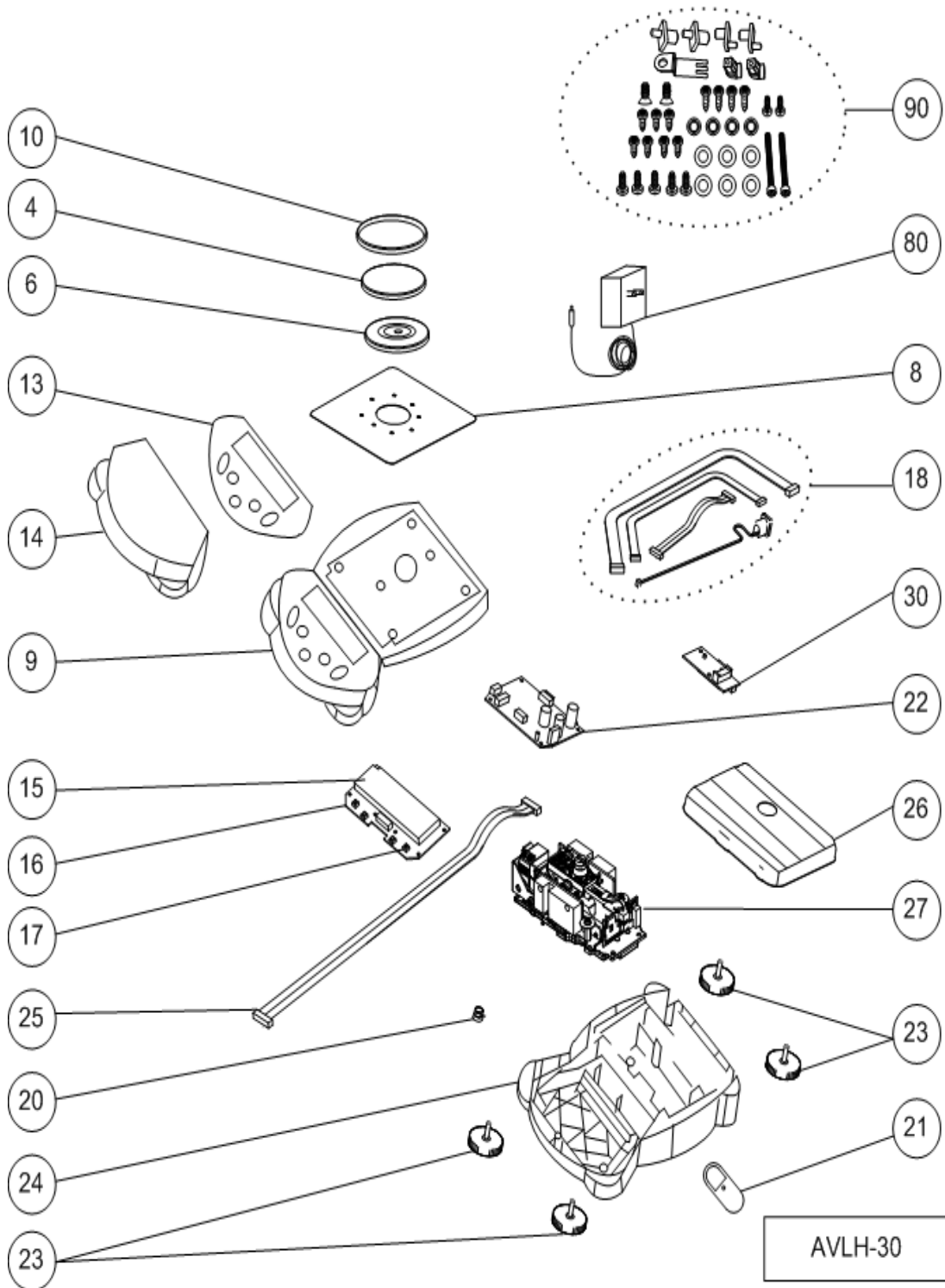
Part numbers are subject to change without notice.



Part numbers are subject to change without notice.

Drawing Item	Part Number	Description
3	12102940	Pan, 4.7 in. / 120mm dia, AdvPro/SL
4	12102943	Pan Sup,4.7/120dia,Sm Hsg,AdvPro/SL
5	12102947	EMC Plate, Round,100mm, Sm. Housing
7	12103945	Wind Ring, 4.7/120, AdvPro/SL
9	12103854	Housing, Top, Small, AdvPro/SL
10	12103929	Function Label, AdvPro
11	12103980	Cover, In-Use, Sm Housing,AdvPro/SL
13	12103901	PCB, Display, AdvPro
14	12103904	LCD & Backlight, AdvPro
15	12103910	Cable Set, Small Housing, AdvPro/SL
16	12103925	Cover WeighBelow, AdvPro,ScoutPro
18	12103920	Housing, Bottom, Small, AdvPro/SL
19	12103927	Cover, Loadcell,Sm Hsing,AdvPro/SL
20	12103900	PCB, Main, SG, Sm Hsing, AdvPro
21	12103936	Level Bubble, Sm Hsing, AdvPro/SL
22	12103923	Feet, Set of 4, AdvPro/SL
23	12103926	Battery Cover, AdvPro/SL
24	42904572	Loadcell Kit, SG, AV212DM, AdvPro
30	12103902	PCB, RS232 Interface, AdvPro
NS	12103257	Box, Sm Hsg, Topload, AdvPro/SL
NS	12103928	Hardware Kit, Sm Housing, AdvPro/SL
NS	80251164	Manual, Instr., DE_AdvPro
NS	80251161	Manual, Instr., EN_AdvPro
NS	80251162	Manual, Instr., ES_AdvPro
NS	80251163	Manual, Instr., FR_AdvPro
NS	80251165	Manual, Instr., IT_AdvPro
NS	83997609	Pkg, Comp.,Sm Hsg,Sq Pan,AdvPro/SL
80	46001724	PWR,W,IN,5W,12VDC,EU
	46001774	
80	46001724	PWR,W,IN,5W,12VDC,AU
	46001775	
80	46001724	PWR,W,IN,5W,12VDC,US/JP
	46001776	
80	46001724	PWR,W,IN,5W,12VDC,UK
	46001777	
NS	12103021	Security plate, Lg Hsg, NTEP, AdvPro
NS	12103921	(P, use 12103854 and 12103929(AdvPro) or 12103852(AdvSL)) Top Cover with Function Label, Avsmall

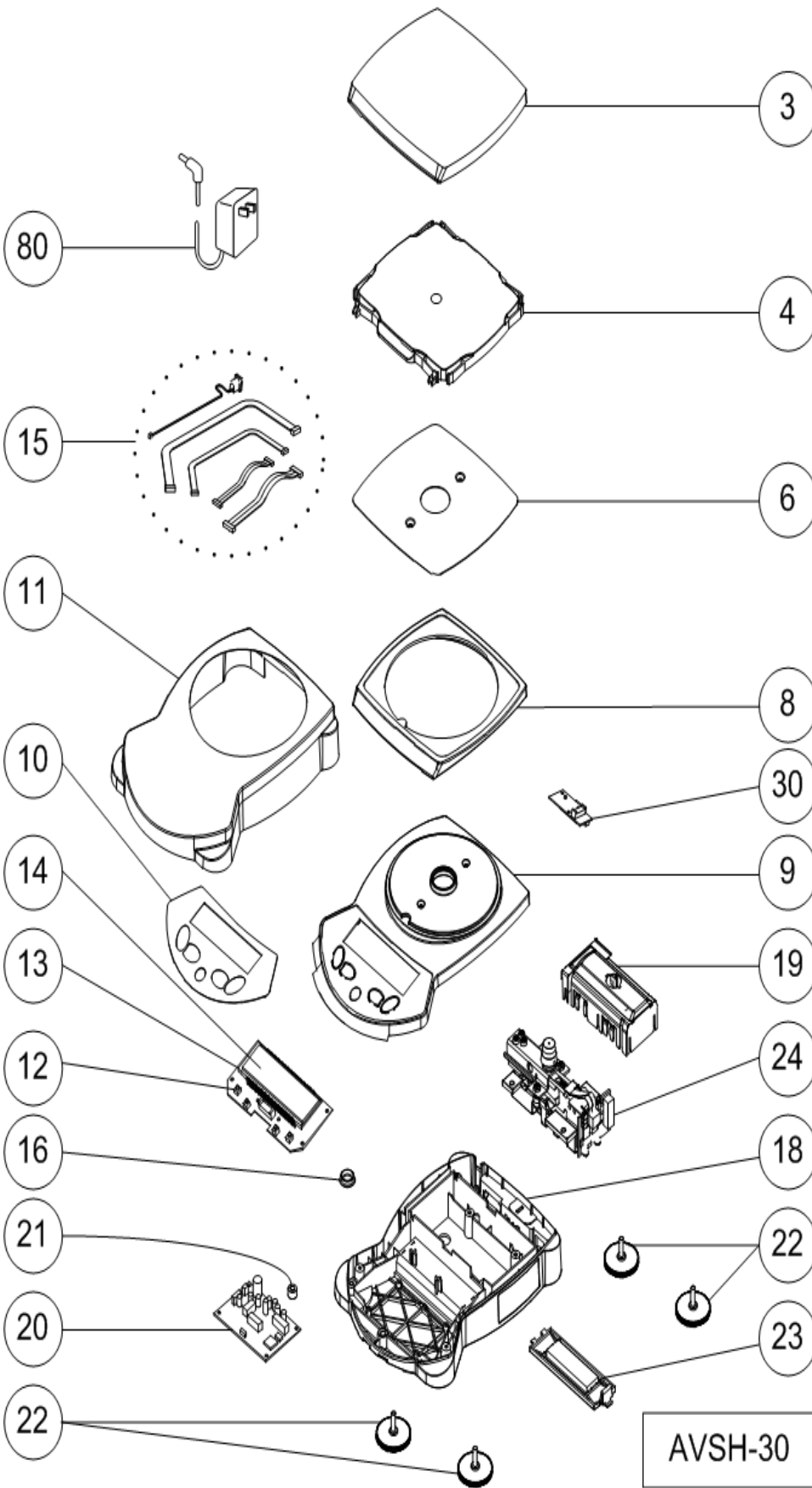
Part numbers are subject to change without notice.



Part numbers are subject to change without notice.

Drawing Item	Part Number	Description
4	12102940	Pan, 4.7 in. / 120mm dia, AdvPro/SL
6	12103867	Pan Sup,4.7/120dia,Lg Hsg,AdvPro/SL
8	12103860	EMC Plate for Round Ring, AdvPro/SL
9	12103852	Housing, Top, Large, AdvPro/SL
10	12103945	Wind Ring, 4.7/120, AdvPro/SL
13	12103929	Function Label, AdvPro
14	12103879	Cover, In-Use, Lg Housing,AdvPro/SL
15	12103904	LCD & Backlight, AdvPro
16	12103901	PCB, Display, AdvPro
18	12103862	Cable Set, Large Housing, AdvPro/SL
20	12103863	Level Bubble, Lg Hsing, AdvPro/SL
21	12103864	Cover WeighBelow,Lg Hsing,AdvPro/SL
22	12103865	PCB, Main, SG, Lg Hsing, AdvPro
23	12103923	Feet, Set of 4, AdvPro/SL
24	12103855	Housing, Bottom, Large, AdvPro/SL
25	42904907	Cable, SG LC, Lg Hsing, AdvPro/SL
26	12103884	Cover, Loadcell,Lg Hsing,AdvPro/SL
27	42904562	Loadcell Kit,SG,212C,Incal, AdvPro
27.1	42904901	InCal Assy complete, SG, AdvPro
27.2	42904906	Motor, InCal, SG, MFR, AdvPro
30	12103902	PCB, RS232 Interface, AdvPro
90	12103877	Hardware Kit, Lg Housing, AdvPro/SL
NS	12103261	Box, Lg Hsg, Topload, AdvPro/SL,PA
NS	80251164	Manual, Instr., DE_AdvPro
NS	80251161	Manual, Instr., EN_AdvPro
NS	80251162	Manual, Instr., ES_AdvPro
NS	80251163	Manual, Instr., FR_AdvPro
NS	80251165	Manual, Instr., IT_AdvPro
NS	12103247	Pkg, Comp.,Lg Hsg,Topload,AdvPro/SL
80	46001724	PWR,W,IN,5W,12VDC,EU
	46001774	
80	46001724	PWR,W,IN,5W,12VDC,AU
	46001775	
80	46001724	PWR,W,IN,5W,12VDC,US/JP
	46001776	
80	46001724	PWR,W,IN,5W,12VDC,UK
	46001777	
NS	12103021	Security plate, Lg Hsg, NTEP, AdvPro
NS	12103921	(P, use 12103854 and 12103929(AdvPro) or 12103852(AdvSL)) Top Cover with Function Label, Avsmall

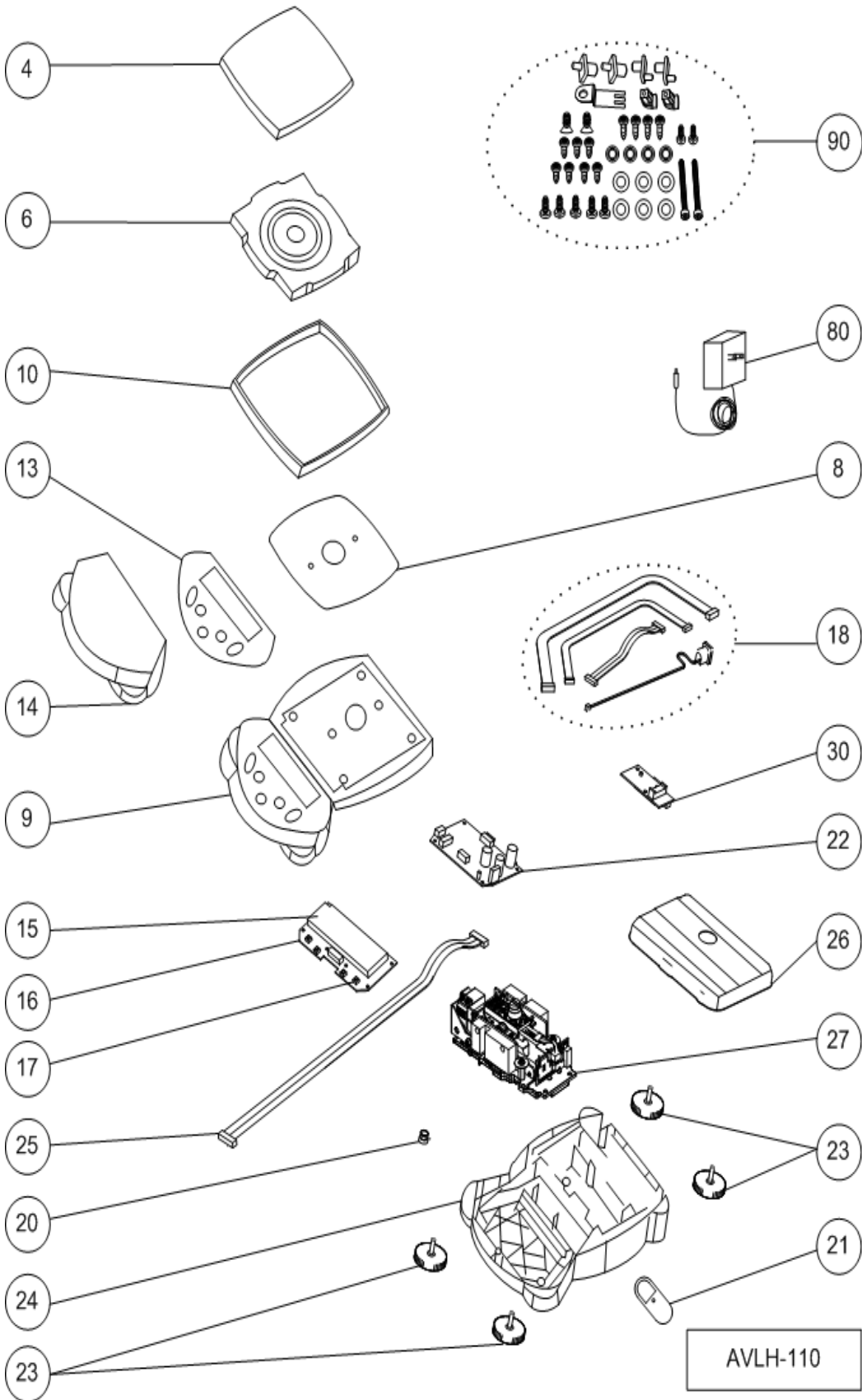
Part numbers are subject to change without notice.



Part numbers are subject to change without notice.

Drawing Item	Part Number	Description
3	12103941	Pan, 5.8x6.3 in./149x162, AdvPro/SL
4	12103944	Pan Sup, 5.8x6.3/149x162, AdvPro/SL
6	12103948	EMC Plate, Square,160mm, Sm Housing
8	12103946	Adapter Ring, Sm. Housing,AdvPro/SL
9	12103854	Housing, Top, Small, AdvPro/SL
10	12103929	Function Label, AdvPro
11	12103980	Cover, In-Use, Sm Housing,AdvPro/SL
13	12103901	PCB, Display, AdvPro
14	12103904	LCD & Backlight, AdvPro
15	12103910	Cable Set, Small Housing, AdvPro/SL
16	12103925	Cover WeighBelow, AdvPro,ScoutPro
18	12103920	Housing, Bottom, Small, AdvPro/SL
19	12103927	Cover, Loadcell,Sm Hsing,AdvPro/SL
20	12103900	PCB, Main, SG, Sm Hsing, AdvPro
21	12103936	Level Bubble, Sm Hsing, AdvPro/SL
22	12103923	Feet, Set of 4, AdvPro/SL
23	12103926	Battery Cover, AdvPro/SL
24	42904573	Loadcell Kit, SG, 812, AdvPro/SL
30	12103902	PCB, RS232 Interface, AdvPro
NS	12103257	Box, Sm Hsg, Topload, AdvPro/SL
NS	12103928	Hardware Kit, Sm Housing, AdvPro/SL
NS	80251164	Manual, Instr., DE_AdvPro
NS	80251161	Manual, Instr., EN_AdvPro
NS	80251162	Manual, Instr., ES_AdvPro
NS	80251163	Manual, Instr., FR_AdvPro
NS	80251165	Manual, Instr., IT_AdvPro
NS	83997609	Pkg, Comp.,Sm Hsg,Sq Pan,AdvPro/SL
80	46001724	PWR,W,IN,5W,12VDC,EU
	46001774	
80	46001724	PWR,W,IN,5W,12VDC,AU
	46001775	
80	46001724	PWR,W,IN,5W,12VDC,US/JP
	46001776	
80	46001724	PWR,W,IN,5W,12VDC,UK
	46001777	
80	12103921	(P, use 12103854 and 12103929(AdvPro) or 12103852(AdvSL)) Top Cover with Function Label, Avsmall
80	12103928	Hardware Kit, Sm Housing, AdvPro/SL
80	12103022	Security plate, Sm Hsg, NTEP, AdvPro

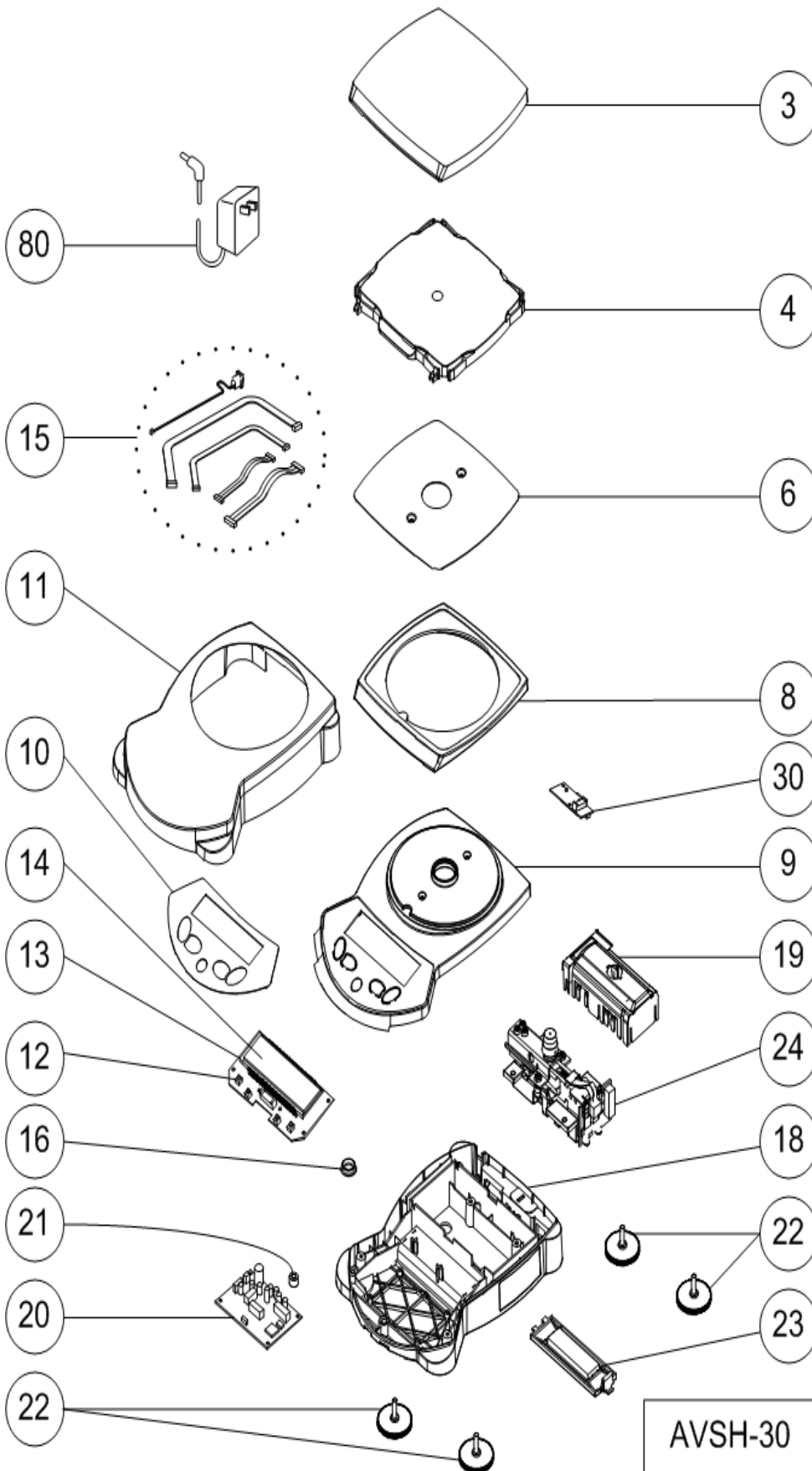
Part numbers are subject to change without notice.



Part numbers are subject to change without notice.

Drawing Item	Part Number	Description
4	12103878	Pan, 6.6x7.1 in./168x180, AdvPro
6	12103858	Pan Sup, 6.6x7.1/168x180, AdvPro/SL
8	12103861	EMC Plate for Square Ring,AdvPro
9	12103852	Housing, Top, Large, AdvPro/SL
10	12103859	Wind Ring,6.6x7.1/168x180,AdvPro
13	12103929	Function Label, AdvPro
14	12103879	Cover, In-Use, Lg Housing,AdvPro/SL
15	12103904	LCD & Backlight, AdvPro
16	12103901	PCB, Display, AdvPro
18	12103862	Cable Set, Large Housing, AdvPro/SL
20	12103863	Level Bubble, Lg Hsing, AdvPro/SL
21	12103864	Cover WeighBelow,Lg Hsing,AdvPro/SL
22	12103865	PCB, Main, SG, Lg Hsing, AdvPro
23	12103923	Feet, Set of 4, AdvPro/SL
24	12103855	Housing, Bottom, Large, AdvPro/SL
25	42904907	Cable, SG LC, Lg Hsing, AdvPro/SL
26	12103884	Cover, Loadcell,Lg Hsing,AdvPro/SL
27	42904561	Loadcell Kit, SG,812C,Incal,AdvPro
27.1	42904901	InCal Assy complete, SG, AdvPro
27.2	42904906	Motor, InCal, SG, MFR, AdvPro
30	12103902	PCB, RS232 Interface, AdvPro
90	12103877	Hardware Kit, Lg Housing, AdvPro/SL
NS	12103261	Box, Lg Hsg, Topload, AdvPro/SL,PA
NS	80251164	Manual, Instr., DE_AdvPro
NS	80251161	Manual, Instr., EN_AdvPro
NS	80251162	Manual, Instr., ES_AdvPro
NS	80251163	Manual, Instr., FR_AdvPro
NS	80251165	Manual, Instr., IT_AdvPro
NS	12103247	Pkg, Comp.,Lg Hsg,Topload,AdvPro/SL
80	46001724	PWR,W,IN,5W,12VDC,EU
	46001774	
80	46001724	PWR,W,IN,5W,12VDC,AU
	46001775	
80	46001724	PWR,W,IN,5W,12VDC,US/JP
	46001776	
80	46001724	PWR,W,IN,5W,12VDC,UK
	46001777	
80	12103928	Hardware Kit, Sm Housing, AdvPro/SL
80	12103022	Security plate, Sm Hsg, NTEP, AdvPro

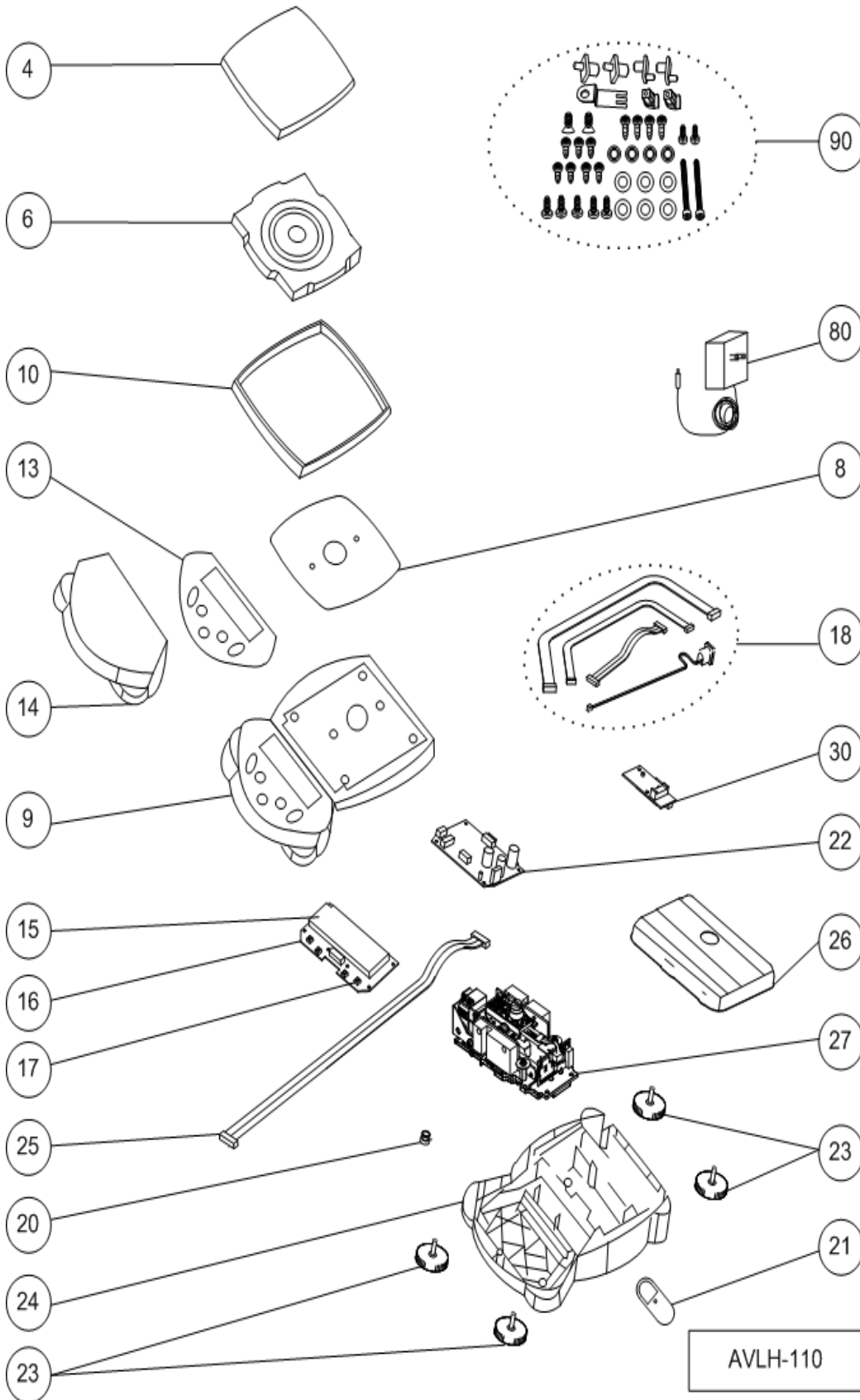
Part numbers are subject to change without notice.



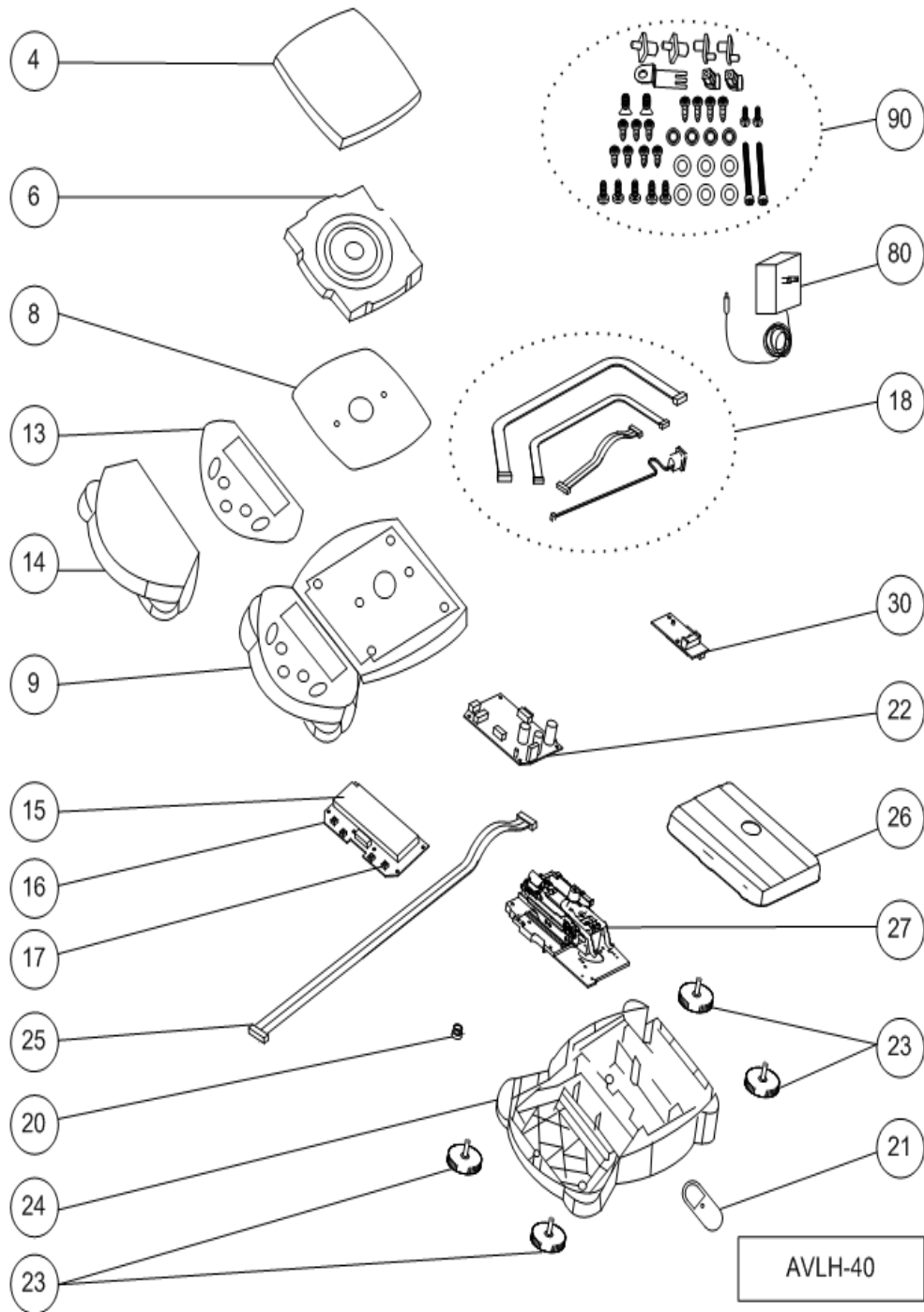
Part numbers are subject to change without notice.

Drawing Item	Part Number	Description
3	12103941	Pan, 5.8x6.3 in./149x162, AdvPro/SL
4	12103944	Pan Sup, 5.8x6.3/149x162, AdvPro/SL
6	12103948	EMC Plate, Square,160mm, Sm Housing
8	12103946	Adapter Ring, Sm. Housing,AdvPro/SL
9	12103854	Housing, Top, Small, AdvPro/SL
10	12103929	Function Label, AdvPro
11	12103980	Cover, In-Use, Sm Housing,AdvPro/SL
13	12103901	PCB, Display, AdvPro
14	12103904	LCD & Backlight, AdvPro
15	12103910	Cable Set, Small Housing, AdvPro/SL
16	12103925	Cover WeighBelow, AdvPro,ScoutPro
18	12103920	Housing, Bottom, Small, AdvPro/SL
19	12103927	Cover, Loadcell,Sm Hsing,AdvPro/SL
20	12103900	PCB, Main, SG, Sm Hsing, AdvPro
21	12103936	Level Bubble, Sm Hsing, AdvPro/SL
22	12103923	Feet, Set of 4, AdvPro/SL
23	12103926	Battery Cover, AdvPro/SL
24	42904576	Loadcell Kit, SG, 8101, AdvPro/SL
30	12103902	PCB, RS232 Interface, AdvPro
NS	12103257	Box, Sm Hsg, Topload, AdvPro/SL
NS	12103928	Hardware Kit, Sm Housing, AdvPro/SL
NS	80251164	Manual, Instr., DE_AdvPro
NS	80251161	Manual, Instr., EN_AdvPro
NS	80251162	Manual, Instr., ES_AdvPro
NS	80251163	Manual, Instr., FR_AdvPro
NS	80251165	Manual, Instr., IT_AdvPro
NS	83997609	Pkg, Comp.,Sm Hsg,Sq Pan,AdvPro/SL
80	46001724	PWR,W,IN,5W,12VDC,EU
	46001774	
80	46001724	PWR,W,IN,5W,12VDC,AU
	46001775	
80	46001724	PWR,W,IN,5W,12VDC,US/JP
	46001776	
80	46001724	PWR,W,IN,5W,12VDC,UK
	46001777	
80	12103921	(P, use 12103854 and 12103929(AdvPro) or 12103852(AdvSL)) Top Cover with Function Label, Avsmall
80	12103928	Hardware Kit, Sm Housing, AdvPro/SL
80	12103022	Security plate, Sm Hsg, NTEP, AdvPro

Part numbers are subject to change without notice.



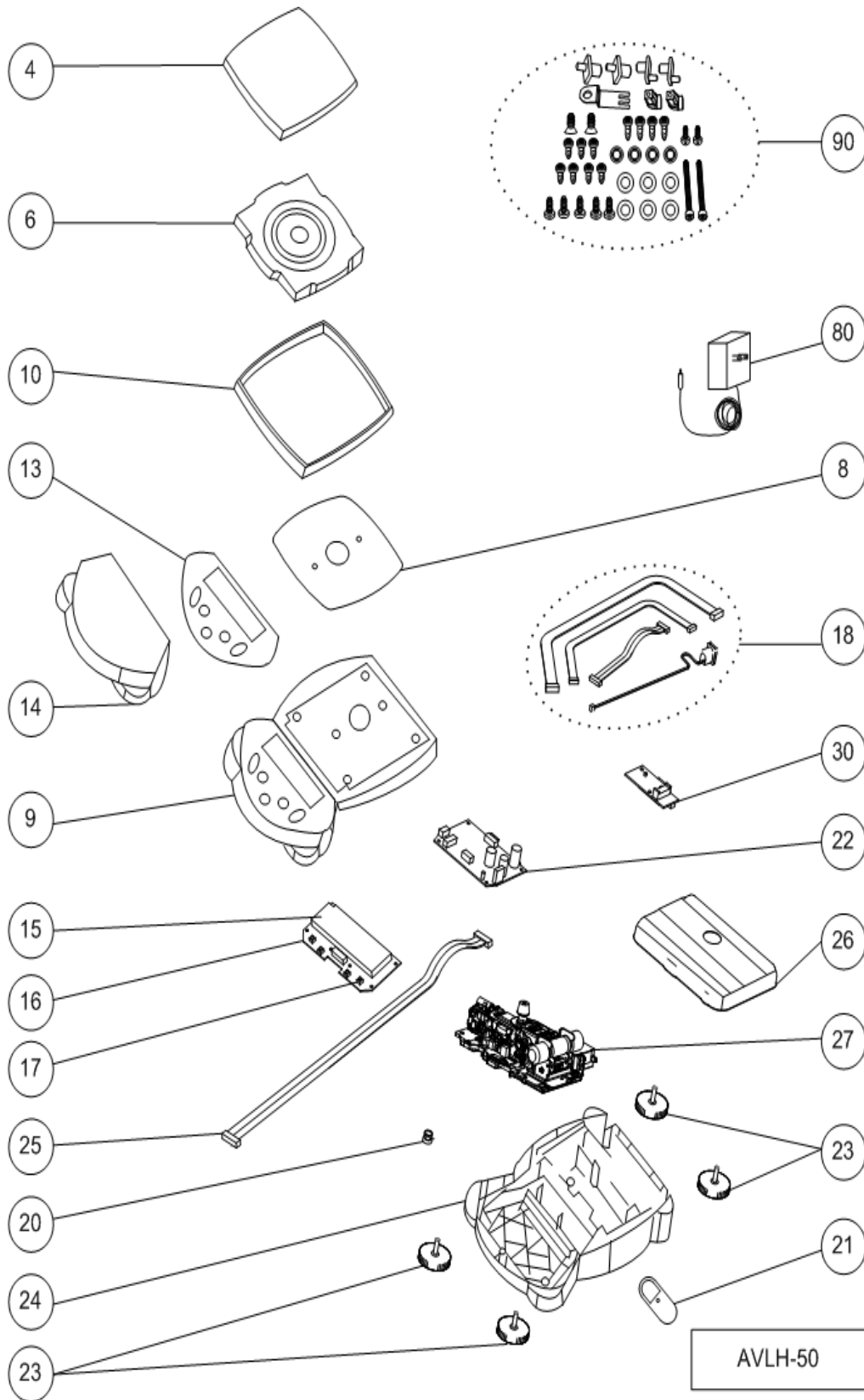
Drawing Item	Part Number	Description
4	12103878	Pan, 6.6x7.1 in./168x180, AdvPro
6	12103858	Pan Sup, 6.6x7.1/168x180, AdvPro/SL
8	12103861	EMC Plate for Square Ring,AdvPro
9	12103852	Housing, Top, Large, AdvPro/SL
10	12103859	Wind Ring,6.6x7.1/168x180,AdvPro
13	12103929	Function Label, AdvPro
14	12103879	Cover, In-Use, Lg Housing,AdvPro/SL
15	12103904	LCD & Backlight, AdvPro
16	12103901	PCB, Display, AdvPro
18	12103862	Cable Set, Large Housing, AdvPro/SL
20	12103863	Level Bubble, Lg Hsing, AdvPro/SL
21	12103864	Cover WeighBelow,Lg Hsing,AdvPro/SL
22	12103865	PCB, Main, SG, Lg Hsing, AdvPro
23	12103923	Feet, Set of 4, AdvPro/SL
24	12103855	Housing, Bottom, Large, AdvPro/SL
25	42904907	Cable, SG LC, Lg Hsing, AdvPro/SL
26	12103884	Cover, Loadcell,Lg Hsing,AdvPro/SL
27	42904560	Loadcell Kit,SG,8101C,Incal,AdvPro
27.1	42904901	InCal Assy complete, SG, AdvPro
27.2	42904906	Motor, InCal, SG, MFR, AdvPro
30	12103902	PCB, RS232 Interface, AdvPro
90	12103877	Hardware Kit, Lg Housing, AdvPro/SL
NS	12103261	Box, Lg Hsg, Topload, AdvPro/SL,PA
NS	80251164	Manual, Instr., DE_AdvPro
NS	80251161	Manual, Instr., EN_AdvPro
NS	80251162	Manual, Instr., ES_AdvPro
NS	80251163	Manual, Instr., FR_AdvPro
NS	80251165	Manual, Instr., IT_AdvPro
NS	12103247	Pkg, Comp.,Lg Hsg,Topload,AdvPro/SL
80	46001724	PWR,W,IN,5W,12VDC,EU
	46001774	
80	46001724	PWR,W,IN,5W,12VDC,AU
	46001775	
80	46001724	PWR,W,IN,5W,12VDC,US/JP
	46001776	
80	46001724	PWR,W,IN,5W,12VDC,UK
	46001777	
NS	12103021	Security plate, Lg Hsg, NTEP, AdvPro



Part numbers are subject to change without notice.

Drawing Item	Part Number	Description
4	12103880	Pan, 7.6x8 in./193x203, AdvPro/SL
6	12103858	Pan Sup, 6.6x7.1/168x180, AdvPro/SL
8	12103883	EMC Plate, No Wind Ring, AdvPro/SL
9	12103852	Housing, Top, Large, AdvPro/SL
13	12103929	Function Label, AdvPro
14	12103879	Cover, In-Use, Lg Housing, AdvPro/SL
15	12103904	LCD & Backlight, AdvPro
16	12103901	PCB, Display, AdvPro
18	12103862	Cable Set, Large Housing, AdvPro/SL
20	12103863	Level Bubble, Lg Hsing, AdvPro/SL
21	12103864	Cover WeighBelow, Lg Hsing, AdvPro/SL
22	12103866	PCB, Main, MFR, Lg Hsing, AdvPro
23	12103923	Feet, Set of 4, AdvPro/SL
24	12103855	Housing, Bottom, Large, AdvPro/SL
25	42904902	Cable, MFR LC, Over 410g, AdvPro/SL
26	12103884	Cover, Loadcell, Lg Hsing, AdvPro/SL
27	42904525	Loadcell Kit, MFR, 4102, AdvPro/SL
27.1	42904905	PCB, MFR LC, over 410g, AdvPro/SL
27.2	42904908	Ratio Beam, MFR Loadcell, AdvPro/SL
27.3	42904909	Sensor, MFR Loadcell, AdvPro/SL
30	12103902	PCB, RS232 Interface, AdvPro
90	12103877	Hardware Kit, Lg Housing, AdvPro/SL
NS	12103261	Box, Lg Hsg, Topload, AdvPro/SL, PA
NS	80251164	Manual, Instr., DE_AdvPro
NS	80251161	Manual, Instr., EN_AdvPro
NS	80251162	Manual, Instr., ES_AdvPro
NS	80251163	Manual, Instr., FR_AdvPro
NS	80251165	Manual, Instr., IT_AdvPro
NS	12103247	Pkg, Comp., Lg Hsg, Topload, AdvPro/SL
80	46001724	PWR, W, IN, 5W, 12VDC, EU
	46001774	
80	46001724	PWR, W, IN, 5W, 12VDC, AU
	46001775	
80	46001724	PWR, W, IN, 5W, 12VDC, US/JP
	46001776	
80	46001724	PWR, W, IN, 5W, 12VDC, UK
	46001777	
NS	12103021	Security plate, Lg Hsg, NTEP, AdvPro

Part numbers are subject to change without notice.



Part numbers are subject to change without notice.

Drawing Item	Part Number	Description
4	12103878	Pan, 6.6x7.1 in./168x180, AdvPro
6	12103858	Pan Sup, 6.6x7.1/168x180, AdvPro/SL
8	12103861	EMC Plate for Square Ring, AdvPro
9	12103852	Housing, Top, Large, AdvPro/SL
10	12103859	Wind Ring, 6.6x7.1/168x180, AdvPro
13	12103929	Function Label, AdvPro
14	12103879	Cover, In-Use, Lg Housing, AdvPro/SL
15	12103904	LCD & Backlight, AdvPro
16	12103901	PCB, Display, AdvPro
18	12103862	Cable Set, Large Housing, AdvPro/SL
20	12103863	Level Bubble, Lg Hsing, AdvPro/SL
21	12103864	Cover WeighBelow, Lg Hsing, AdvPro/SL
22	12103866	PCB, Main, MFR, Lg Hsing, AdvPro
23	12103923	Feet, Set of 4, AdvPro/SL
24	12103855	Housing, Bottom, Large, AdvPro/SL
25	42904902	Cable, MFR LC, Over 410g, AdvPro/SL
26	12103884	Cover, Loadcell, Lg Hsing, AdvPro/SL
27	80252510	Loadcell Kit, MFR, InCal, 4102, AdvPro
27.1	42904905	PCB, MFR LC, over 410g, AdvPro/SL
27.2	42904908	Ratio Beam, MFR Loadcell, AdvPro/SL
27.3	42904909	Sensor, MFR Loadcell, AdvPro/SL
27.4	42904906	Motor, InCal, SG, MFR, AdvPro
27.5	42904900	InCal Assy complete, MFR, AdvPro
30	12103902	PCB, RS232 Interface, AdvPro
90	12103877	Hardware Kit, Lg Housing, AdvPro/SL
NS	12103261	Box, Lg Hsg, Topload, AdvPro/SL, PA
NS	80251164	Manual, Instr., DE, AdvPro
NS	80251161	Manual, Instr., EN, AdvPro
NS	80251162	Manual, Instr., ES, AdvPro
NS	80251163	Manual, Instr., FR, AdvPro
NS	80251165	Manual, Instr., IT, AdvPro
NS	12103247	Pkg, Comp., Lg Hsg, Topload, AdvPro/SL
80	46001724	PWR, W, IN, 5W, 12VDC, EU
	46001774	
80	46001724	PWR, W, IN, 5W, 12VDC, AU
	46001775	
80	46001724	PWR, W, IN, 5W, 12VDC, US/JP
	46001776	
80	46001724	PWR, W, IN, 5W, 12VDC, UK
	46001777	
NS	12103021	Security plate, Lg Hsg, NTEP, AdvPro

Part numbers are subject to change without notice.