

This document courtesy of:



[Data Weighing Systems, Inc.](#)

[Contact Us](#)

For immediate assistance call
1-800-750-6842



Product Bulletin

PB # 0006
October 2007



408.292.2214
408.292.2733
sales@etorque.com
www.etorque.com



TorqueLab (LTT-Series)

Torque and Angle Analyzer

The new LTT is the next generation of Mountz torque analyzer. It offers "EZ-Plug & Play" with instant auto recognition with Mountz transducers. The LTT offers tool testing, graphing capabilities and a graphical menu for easy navigation.



Supplied with NIST-Traceable
Certification of Calibration

- ❑ Accuracy +/- 0.5% of reading from 20% to 100% of full scale.
Accuracy +/- 1% of reading from 10% to 20% of full scale.
- ❑ Recommended for all hand screwdrivers, wrenches or power tools.
- ❑ Provides "EZ-Plug & Play" with Mountz Transducers. Features "ARCII" technology, an instant auto-recognition system of the transducer connected to the LTT.
- ❑ Selection of six operating modes: (Track, Peak, First Peak, Audit, Torque + Angle, and Tool Test).
- ❑ Seven units of torque measurements: (ozf.in, lbf.in, lbf.ft, cN.m, N.m, kgf.m, kgf.cm).
- ❑ Two units of force measurements: (lbf and kN).
- ❑ Features built-in Tool Tests operation.
- ❑ Includes three PC Windows based software programs:
 - Mountz Torque Meter Interface Program**- for sensor calibrations, meter calibration and tool tests.
 - Torque Meter Bootloader** - for updating the LTT operating systems.
 - Mountz Statistics Calculator** - for SPC, CP & CPK calculations.
- ❑ "Flash" memory allows upgrades to be done by the user in the field & internet through the USB port.
- ❑ Five low-pass filter selections (3000, 2000, 1500, 500 and 200 Hz).
- ❑ Easy to use menu structure, a six-digit display and connect to an external transducer.
- ❑ Real Time Clock for time stamping of readings.
- ❑ USB interface to download readings to PC.
- ❑ High Capacity Li-Ion Batteries for long life (30 hrs with standard transducers and 16 hrs with brushless rotary).
- ❑ Can connect to most mv/v transducers and can store calibration data for up to 50 non smart torque & force sensors.
- ❑ The 5VDC capability allows unit to be used with a Brushless Rotary Transducer for testing pulse tools and high RPM tools.
- ❑ Torque and Angle data is displayed simultaneously when used with Torque and Angle transducers, up to 8000 RPM for angle measurement.
- ❑ Stores a total of 2500 data points.
- ❑ Real time graph of torque vs. time using associated PC Windows software.
- ❑ Features a Buzzer and Go / No Go LEDs that illuminate when high or low setting is achieved.
- ❑ Display Accuracy is better than +/- 0.0625 of reading.

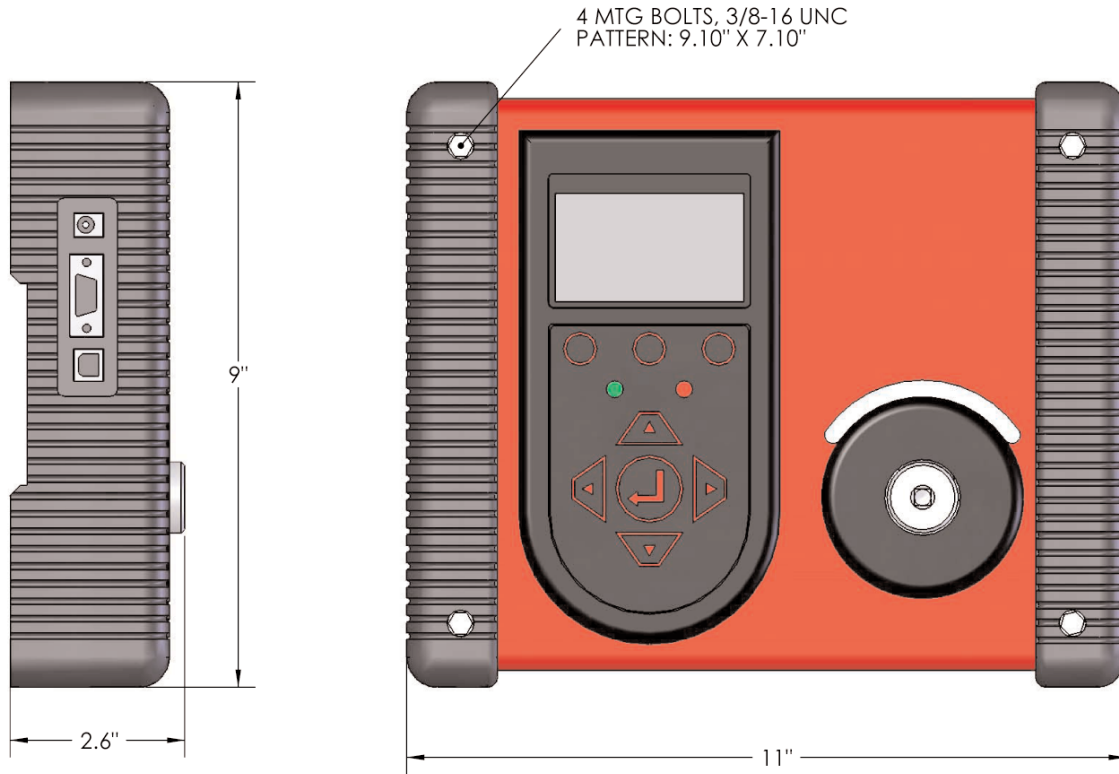


Product Bulletin

PB # 0006
October 2007



408.292.2214
408.292.2733
sales@etorque.com
www.etorque.com



Torque Ranges

Model	Item #	American	S.I.	Metric	Drive Size	Weight
LTT10i	068400	1 - 10 lbf.in	11.3 - 113.cN.m	1.2 - 11.5 kgf.cm	1/4 F/Sq	8 lbs.
LTT25i	068401	2.5 - 25 lbf.in	28.25 - 282.5 cN.m	2.9 - 28.8 kgf.cm	1/4 F/Sq	8 lbs.
LTT50i	068402	5 - 50 lbf.in	56.5 - 565.cN.m	5.8 - 57.6 kgf.cm	1/4 F/Sq	8 lbs.
LTT100i	068403	10 - 100 lbf.in	113 - 1130 cN.m	11.5 - 115 kgf.cm	1/4 F/Sq	8 lbs.
LTT250i	068404	25 - 250 lbf.in	282.5 - 2825 cN.m	28.8 - 288 kgf.cm	1/4 F/Sq	8 lbs.
LTT50F	068405	5 - 50 lbf.ft	6.8 - 67.8 N.m	0.7 - 6.9 kgf.m	3/8 F/Sq	8 lbs.
LTT100F	068406	10 - 100 lbf.ft	13.56 - 135.6 N.m	1.4 - 13.8 kgf.cm	1/2 F/Sq	8 lbs.
LTT250F	068407	25 - 250 lbf.ft	33.9 - 339 N.m	3.5 - 34.5 kgf.m	1/2 F/Sq	8 lbs.

Note!

Since a tester cannot always duplicate actual joint characteristic, the torque reading displayed on the LTT may vary from the actual torque that a tool will apply to a joint. When critical assemblies are involved, the torque output of the power tool being used should be verified on the actual assembly using a calibrated measuring torque tool.



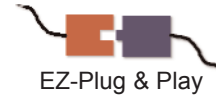
Product Bulletin

PB # 0003
October 2007



Cable Chart

Transducer	Cable Item #
RTSX-A	072000
BLRTSX	072001
BMX	072002 </td
SDX	072004
RTSX	072005
ETX	072006



* Contact Customer Service for connecting a SMX to the LTT

Standard Accessories included with LTT:

- Universal Charger (100 - 240 VAC)
- USB Cable
- Software - Mountz Torque Meter Interface Program
- Software - Torque Meter Bootloader
- Software - Mountz Statistics Calculator
- Run Down Adapter
- Case



Multiplexer

Connect 1-4 transducers to the Torque Analyzer simultaneously. Eliminates the need to plug and unplug transducers.

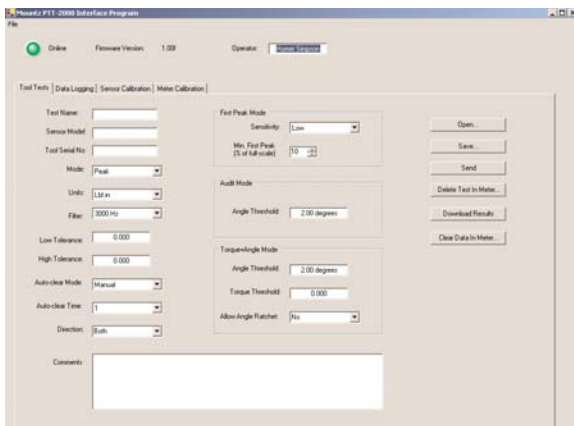
Accessories

Description	Item #
Charger (100 - 240 VAC)	770300
USB Cable	770319
Battery Pack	072506
Multiplexer	072998
Bar Code Reader	072997

Bar Code Reader



Plug-in a bar code reader to the LTT torque tester. Designed to scan Bar Codes on Tools and start Tool Tests automatically. Reduces operational time for users with a large number of Tool Tests stored in the analyzer.



Tool Tests & Graphing

The LTT allows you to set up and create tool tests and save the readings so you can export the data to a PC for documentation. It's the ideal solution for organizing and storing test data for ISO and SPC documentation.

The ability to graph a dynamic rundown allows joint analysis. Great resource to evaluate, create or confirm a torque specification or tool being used in production.

The "Mountz Statics Calculator" allows operators to perform basic SPC, CP & CPK calculations.